



Ready or Knot

32' (9.75m) 2001 Luhrs 32 Convertible
Freeport Texas United States



OVERVIEW

Manufacturer:	<i>Luhrs</i>		
Engines:	2 Yanmar	Hull Material:	Fiberglass
Engine Model:	6LYA-STA	Cruise Speed:	
Engine HP:	350	Max Speed:	
Beam:	11' 8"	Cabins/Heads:	1 / 1
Max Draft:	"	Fuel Type:	Diesel
Water:	60 G (227.12 L)	Fuel:	320 G (1211.33 L)

\$84,995





Data Sheet

Category: Sport Fishing
Subcategory: Convertible Boats
Condition: Used
Model Year: 2001
Beam: 11'8" (3.56m)
Min Draft: 3' (0.91m)
LOA: 32' 10" (10.01m)
Cabins: 1
Sleeps: 3
Heads: 1

Fuel Type: Diesel
Hull Material: Fiberglass

Displacement: 16250 lbs
Fuel Tank: 320 gal (1211.33 liters)
Fresh Water: 60 gal (227.12 liters)
HIN/IMO: LHRDC101H001
Stock #: BR8837-JCB/KB

Engines/Generators

Engine 1

Yanmar
6LYA-STA
Inboard
350HP
Fuel: Diesel
Hours: 1354
Hours Date: 07-10-2020
Year: 2001
Serial #: 50868
Location: Port

Engine 2

Yanmar
6LYA-STA
Inboard
350HP
Fuel: Diesel
Hours: 1375
Hours Date: 07-10-2020
Year: 2001
Serial #: 50876
Location: Starboard



Summary/Description

For Sale

2001 32 Luhrs Convertible Ready or Knot

Ready or Knot is an extensively updated 2001 32' Luhrs Convertible that is ready to fish. She is perfectly suited for fishing excursions, cruising, and extended weekend stays. Her air-conditioned interior is well appointed and has all the conveniences and comforts of home. Powered by reliable twin Yanmar 350 HP diesel engines Ready or Knot is a great entry-level sportfish.

Salon

- New carpet runner throughout salon
- Lounge seating to starboard
- Removable table
- LCD flatscreen smart TV
- Main systems breaker panel to starboard
- LED overhead lighting throughout
- Newly installed cabinet with 5 storage drawers
- Overhead rod storage
- Overhead bulkhead storage compartments
- 2 New JL Audio subwoofers and amp (**New 2020**)
- 3 New fire extinguishers

Galley

- Synthetic countertop w/ stainless steel sink
- New stainless-steel faucet
- Sunbeam microwave (New 2019)
- Dual burner electric cooktop
- Overhead coffee maker
- Haier refrigerator (New 2019)
- Storage cabinet and drawers below sink

Head Compartment

- Vanity with stainless steel sink and faucet
- Mirror
- Vacuflush toilet
- Shower stall

V-Berth

- 2 person berth with new mattress (New 2019)
- Storage drawers and compartment located beneath berth
- LCD flatscreen smart TV
- Overhead skylight hatch
- Overhead LED lighting throughout

Cockpit

- Freshwater washdown
- Raw water washdown
- 2 adjustable pedestal fighting chairs
- Non-skid decking
- Transom fishbox
- Tuna door
- Flush mounted gunnel rod holders
- Livewell
- Under-step cooler
- 50 Amp shorepower connection
- 4-rod overhead rocket launcher

Flybridge

- Garmin GPS Map 5212 Chartplotter
- Garmin GPS Map 741 XS
- Aluminum steering wheel
- Engine controls
- Dual AM/FM/CD Bluetooth stereo head unit
- ACR spotlight controls
- Engine ignition switches
- Analog engine gauges
- Windlass controls
- Trim tab controls
- VHF Radio
- Saturn compass
- Newly reupholstered helm seat
- Newly reupholstered bench seating forward of helm
- Pyle tower speakers
- Forward storage compartments
- New Overhead LED lighting

Electronics

- Garmin GPS Map 5212 Chartplotter
- Garmin GPS Map 741 XS
- Garmin Steady Cast
- Garmin Panoptix PS30 Livescope
- Garmin GT23 Transducer
- Garmin Weather Radar
- 2 JL Audio subs w/ Amp in salon

Engine Room

- 2 Yanmar 6LYA-STE 350 HP Diesel Engines
- Kohler 5kW Generator (1,767 HR's)
- Custom 50 gallon auxiliary fuel tank w/transfer pump to main tank **(New 2020)**
- 2 starting batteries **(New 2020)**
- Racor main engine fuel filters



- New air-conditioning pump **(New 2019)**
- New main fuel tank pickup installed in tank **(New 2019)**
- Battery charger
- New SureFlow freshwater pump **(New 2020)**

Hull

- Lee 28' Outriggers **(New 2020)**
- Fortress anchor
- Electric windlass with foot controls
- New Hydraulic Trim Tab pump installed **(New 2019)**
- New hull zincs
- Recent bottom job

Exclusions

Owner's personal effects, tools, and gear





Luhrs 32 Convertible 2001 Ready or Knot



Luhrs 32 Convertible 2001 Ready or Knot



Luhrs 32 Convertible 2001 Ready or Knot



Luhrs 32 Convertible 2001 Ready or Knot



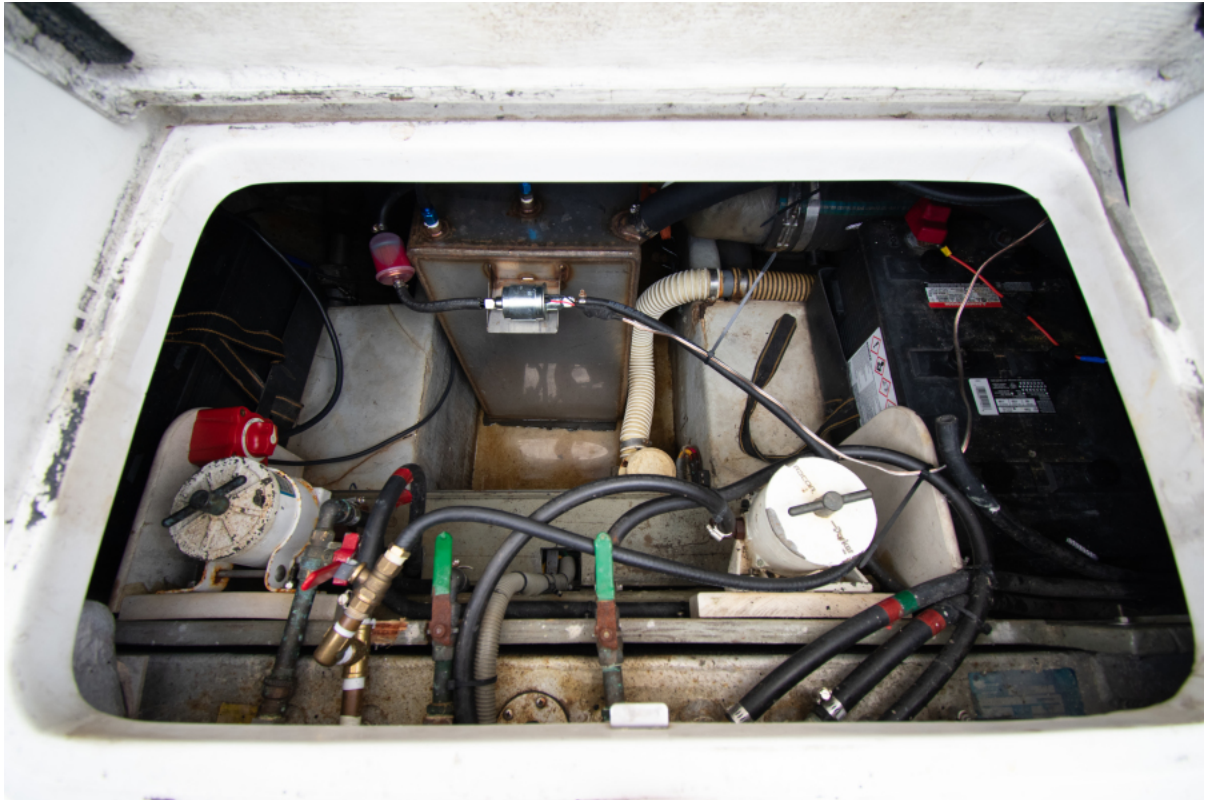
Luhrs 32 Convertible 2001 Ready or Knot



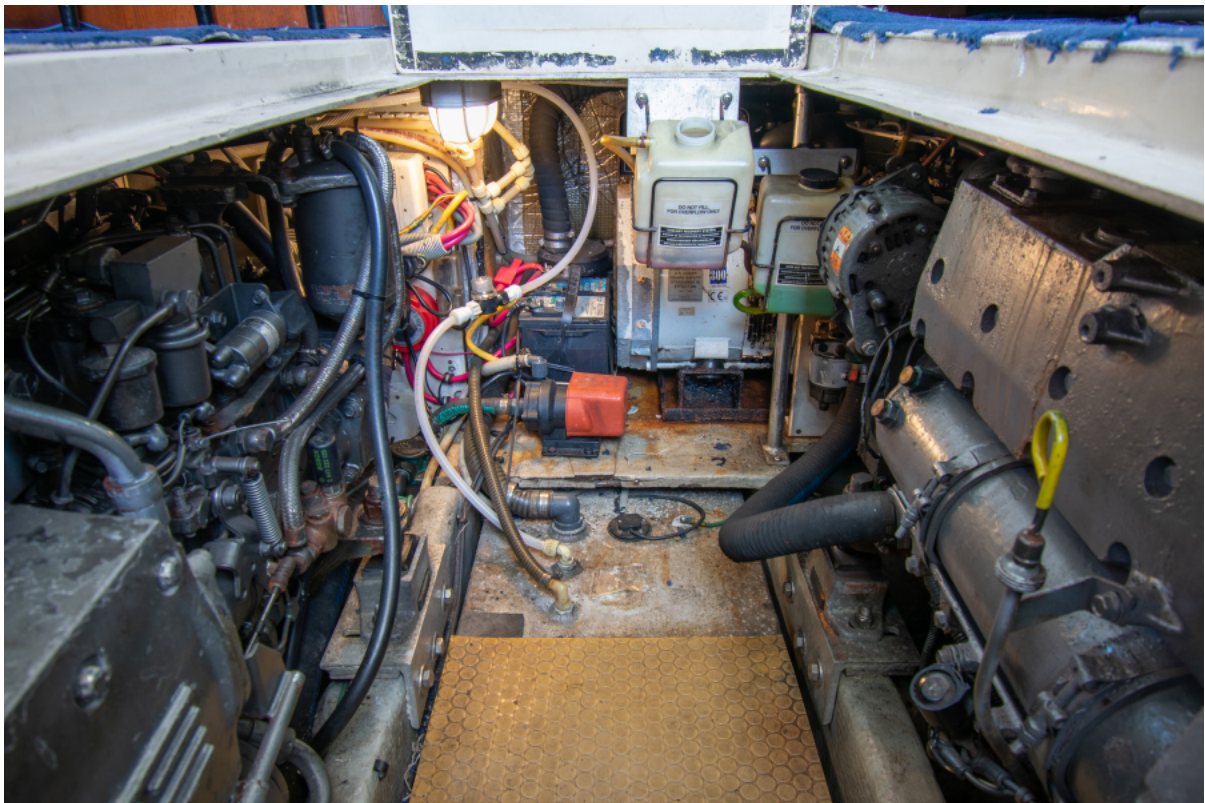
Luhrs 32 Convertible 2001 Ready or Knot



Luhrs 32 Convertible 2001 Ready or Knot



Luhrs 32 Convertible 2001 Ready or Knot



Luhrs 32 Convertible 2001 Ready or Knot



Luhrs 32 Convertible 2001 Ready or Knot



Luhrs 32 Convertible 2001 Ready or Knot



Luhrs 32 Convertible 2001 Ready or Knot



Luhrs 32 Convertible 2001 Ready or Knot



Luhrs 32 Convertible 2001 Ready or Knot



Luhrs 32 Convertible 2001 Ready or Knot



Luhrs 32 Convertible 2001 Ready or Knot