



Dos Locos

46' (14.02m) 2003 Carver 46 Voyager
Galveston Texas United States



OVERVIEW

Manufacturer:	Carver	Hull Material:	Fiberglass
Engines:	2 Volvo Penta	Cruise Speed:	
Engine Model:	TAMD75EDC	Max Speed:	
Engine HP:	475	Cabins/Heads:	3 / 2
Beam:	14' 11"	Fuel Type:	Diesel
Max Draft:	"	Fuel:	560 G (2119.83 L)
Water:	150 G (567.81 L)		

\$259,000





Data Sheet

Category: Motor Yachts
Condition: Used
Model Year: 2003
Beam: 14'11" (4.55m)
Min Draft: 3' 7" (1.09m)
LOA: 46' (14.02m)
Cabins: 3
Sleeps: 8
Heads: 2

Fuel Type: Diesel
Hull Material: Fiberglass
Bridge Clearance: 19' 11"

Displacement: 39600 lbs
Fuel Tank: 560 gal (2119.83 liters)
Fresh Water: 150 gal (567.81 liters)
Holding Tank: 80 gal (302.83 liters)
HIN/IMO: CDEC4002I203
Stock #: BR8828-CW

Engines/Generators

Engine 1

Volvo Penta
TAMD75EDC
Inboard
475HP
Fuel: Diesel
Hours: 420
Hours Date: 09-09-2021
Year: 2003
Serial #: 2071160672
Location: Port

Engine 2

Volvo Penta
TAMD75EDC
Inboard
475HP
Fuel: Diesel
Hours: 420
Hours Date: 09-09-2021
Year: 2003
Serial #: 2071161493
Location: Starboard



Summary/Description

For Sale

2003 Carver Yachts 46 Voyager Dos Locos

Thank you for viewing "Dos Locos" - an amazing 2003 46 Carver Voyager for sale in Texas. Her gel coat shines like new, all canvas looks new, interior has no odors and shows no wear and tear. Go on down to the engine room and you will be pleased again. Fresh bottom job at the beginning of last season. This boat is ready to enjoy with 3 Staterooms and 2 heads, space for washer & dryer, and pull-out sleeper sofa in salon. Do the loop aboard and cruise the Bahamas.

- Twin Volvo TMAD75 Diesel engines w/Electronic Shifters & Digital engine Display (320HRS)
- Kohler 15.5KW Generator w/Sound Box (2400HRS)
- Bow & Stern Thrusters
- Davit Crane w/Tender Cradle
- Fuel Polisher & Oil Change System
- KVH M3 Tracking Satellite
- 60" Fold Down TV in Salon
- Custom Carpet
- Glendinning Cable Master

All photos are recent. This boat is a true pleasure to show!

Overview

The Carver 460 Voyager combines superior function with luxury and space never before seen in a yacht this size. This new Voyager focuses on the interior space for living, weekend cruising and entertaining while still providing the luxurious overnight accommodations one would expect from Carver - with one added bonus: this is now a three-stateroom yacht. As passengers walk onboard and step into the full-beam salon through the tinted glass sliding cockpit door, they immediately see and feel an open concept that one would expect to find in a custom home. A Flexsteel UltraLeather L-shaped lounge that seats four is port and to starboard are two designer chairs surrounded by an elegant array of custom cherry wood cabinetry. Recessed lighting will make nighttime entertaining possible while enjoying the 360-degree water view. Granite flooring and countertops, smooth-top stove, coffee maker, convection microwave, and side-by-side refrigerator/freezer complete the impressive galley. The raised dinette seats four comfortably. With over 10 feet of headroom in this environment guests have not only a spectacular water view, but a custom Sapele pommel table with cherry tambour vertical under cabinets will be a great conversation topic. Stepping down into the hallway that leads to the staterooms owners will find excellent space and cabinets for cruising needs. A VIP Stateroom is to starboard and mid stateroom is to port. Both include designer fabrics and cherry wood cabinetry. A guest head with separate shower provides superior luxuries. The forward master stateroom boasts a wide walk-around island bed with innerspring mattress. Plenty of hanging lockers and cabinets housed in cherry wood allow for clothing storage and owners can sleep in late or retire early to view a favorite movie on the flat-screen TV w/ DVD Player. The master head and separate shower provide all the comforts of home. (Powerboat Guide)

Salon

- Updated & Upgraded Carpet
- Flexsteel Sofa that Converts to Double Bed (Starboard)
- Flexsteel Sofa Port (Ultraleather Sofa's Show Beautiful)
- Large Dinette w/Seating for (4)
- 60" Fold Down Flat Screen TV
- (2) Reverse Cycle AC & Heat w/De Humidifier

- Wooden Mini Blinds
- 110V GFCI Protected Outlets (2)
- Sapele Pommele Countertops
- Curtain over Entrance Door (Décor Matched)
- Dry Bar
- 22" LCD TV
- AM/FM Receiver
- Stainless Steel Entrance Door
- Storage Cabinets (5)
- Storage Drawers (2)
- Exterior Solar Screen Covers

Master Stateroom

- 110V GFCI Protected Outlets (2)
- Queen Island Berth
- Sapele Pommele Countertop
- Curtains
- Solid Cherry Wood Frame Door
- (2) Cedar Lined Hanging Locker
- Overhead Lights (5)
- Mirrored Headboard
- Overhead Hatch
- (2) Portlights
- Storage Beneath Mattress
- Storage Cabinets (4)
- Storage Drawers (3)

Master Head

- 110V GFCI Outlet
- Solid Cherry Wood Frame Entrance Door
- Head Fan
- Overhead Lights
- Medicine Cabinets
- Mirrored Ceiling
- Nonskid Sole
- Vacu Flush Toilet
- Towel Ring
- Towel Bar
- Vanity
- Stall Shower w/Bench Seat
- Overhead Light in Shower
- Shower Head w/Adjustable height and detachable

VIP Stateroom

- 110V GFCI Protected Outlet
- (2) Berths convert to Queen
- Sapele Pommele Countertops
- Solid Cherry Wood Frame Entrance Door

- Cedar Lined Hanging Locker w/Automatic Light
- Overhead Lights
- Mirrored Headboard
- (2) Screened Portlights
- Skylight
- Storage Beneath Mattress
- Storage Cabinet
- (4) Storage Drawers

Guest Head

- Solid Cherry Wood Frame Entrance Door
- Head Fan
- Overhead Lighting
- Medicine Cabinet
- Mirrored Ceiling
- Nonskid Sole
- Portlight
- VacuFlush Toilet
- Towel Ring
- Vanity
- Stall Shower w/Bench Seat
- Adjustable Height Shower Head

3rd Stateroom

- Double Berth
- Hanging Locker
- Overhead Lights
- Screened Portlight
- Storage Beneath Mattress
- Storage Cabinets (2)
- Storage Drawers (2)

Galley

- Galley Up Layout
- Granite Flooring
- Convection Microwave
- Princess 3 Burner Electric Stove
- Nova Cool Refrigerator/Freezer
- Coffee Maker
- 110V GFCI Protected Outlet
- AC/DC Main Distribution Panel
- Granite Countertops
- Range Vent
- Sink
- Storage Cabinets (4)
- Storage Drawers (3)

Dinette



- U-Shaped Lounge w/Ultraleather w/Storage
- Storage Cabinets (2)
- Sapele Pommele Inlay top w/Raised Cherry Wood Trim

Helm/Bridge

- Stairs to Bridge from Cockpit
- Wrap Around Seating
- Double Helm Chairs
- Bimini Top w/Full Enclosures
- Covers for All Helm Seating

Electronics

- Raymarine 215 VHF
- Raymarine ST60
- NO Auto Pilot
- Raymarine E80 GPS/Depth/Chart
- Ritchie Compass

Electrical System

- AC/DC Distribution Panels
- (3) Battery Chargers
- AC/DC Converters
- Generator 15.5KW (2400Hrs)

Mechanical Equipment

- Reverse Cycle Air conditioning, Heat & Dehumidifier
- Bow Thruster (QL)
- Stern Thruster (QL)
- Synthetic Cutlass Bearings
- Dripless Shaft Logs
- Fresh Water Cooling for Engines & Gen.
- Baffled Fuel Tanks
- Malber Washer/Dryer Combo
- Hydraulic Steering
- Seawater Strainers
- Hydraulic Trim Tabs

Engine Room

- Volvo Penta TAMD75EDC 475HP Engines (420HRS)
- 11 Gal Water Heater
- Racors
- 28X33 Propellers

Cockpit

- Swim Platform w/Storage & Ladder
- Entrance To Engine Room





Decks

- Nautical Structures DD600-76 Dingy Davit
- Maxwell 1200 Anchor Windlass Fortress 23 w/150' Chain Rode

Hull

Fresh Bottom Paint 2020

Exclusions

Seller's Personal Items

Broker's Remarks

This 460 is a refreshing boat to view due to its condition and lifetime of care.





Carver 46 Voyager 2003 Dos Locos



Carver 46 Voyager 2003 Dos Locos



Carver 46 Voyager 2003 Dos Locos



Carver 46 Voyager 2003 Dos Locos Salon



Carver 46 Voyager 2003 Dos Locos



Carver 46 Voyager 2003 Dos Locos



Carver 46 Voyager 2003 Dos Locos



Carver 46 Voyager 2003 Dos Locos



Carver 46 Voyager 2003 Dos Locos Dinette



Carver 46 Voyager 2003 Dos Locos Galley



Carver 46 Voyager 2003 Dos Locos



Carver 46 Voyager 2003 Dos Locos



Carver 46 Voyager 2003 Dos Locos Guest Stateroom



Carver 46 Voyager 2003 Dos Locos Washer/Dryer



Carver 46 Voyager 2003 Dos Locos Guest Stateroom



Carver 46 Voyager 2003 Dos Locos Master Stateroom



Carver 46 Voyager 2003 Dos Locos Head



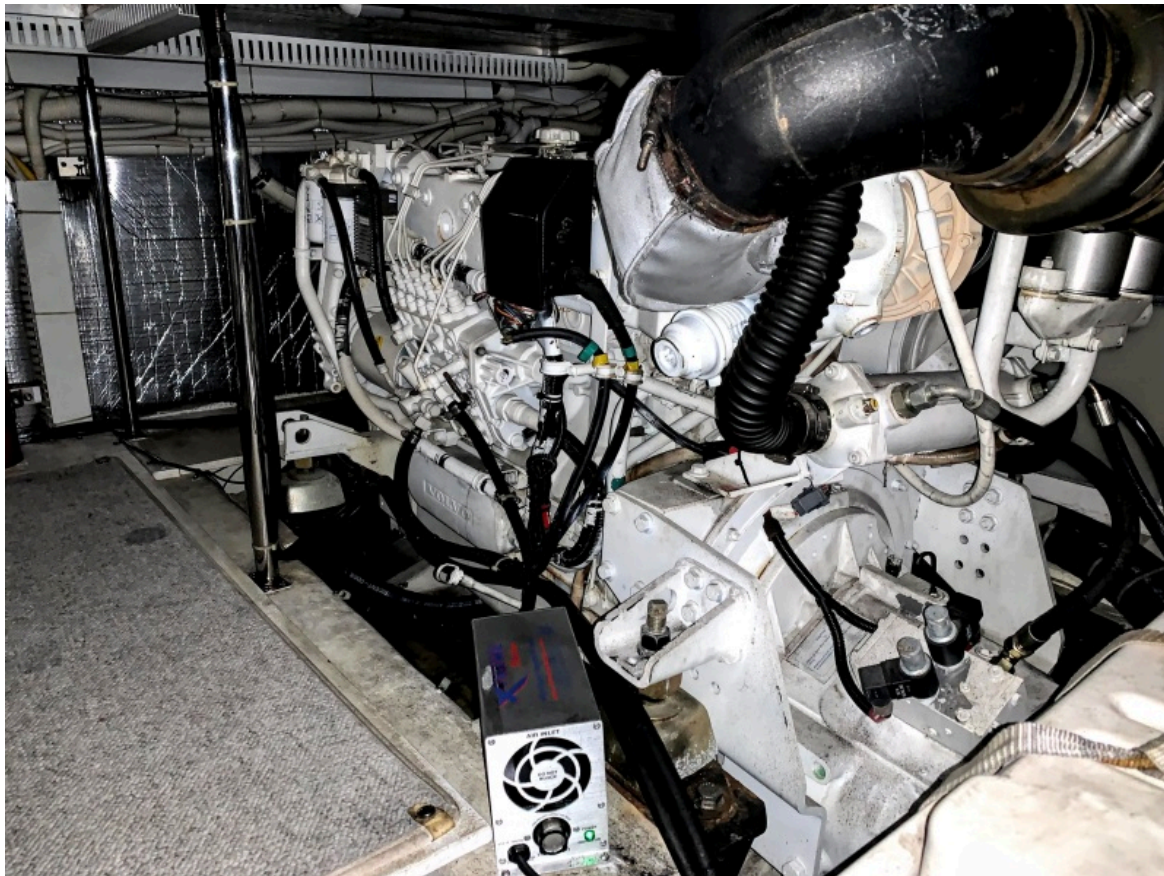
Carver 46 Voyager 2003 Dos Locos



Carver 46 Voyager 2003 Dos Locos



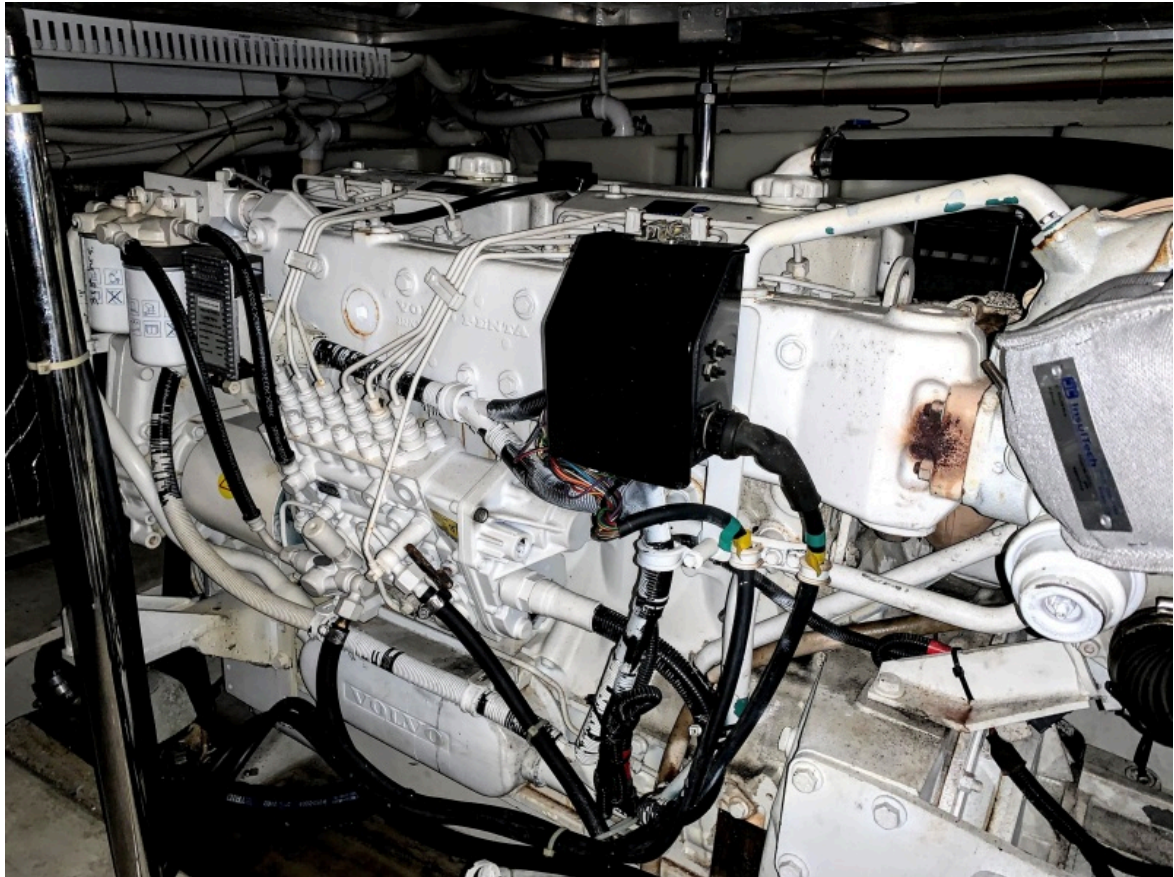
Carver 46 Voyager 2003 Dos Locos



Carver 46 Voyager 2003 Dos Locos Engine Room



Carver 46 Voyager 2003 Dos Locos



Carver 46 Voyager 2003 Dos Locos



Carver 46 Voyager 2003 Dos Locos



Carver 46 Voyager 2003 Dos Locos



Carver 46 Voyager 2003 Dos Locos



Carver 46 Voyager 2003 Dos Locos