



# MONI

107' (32.61m) 2013 Vicem Raised Pilot House  
West Palm Beach Florida United States



## OVERVIEW

Manufacturer: *Vicem*

Engines:	1 Caterpillar	Hull Material:	Other
Engine Model:	C32	Cruise Speed:	15 Knots
Engine HP:	1550	Max Speed:	19 Knots
Beam:	23' 11"	Cabins/Heads:	5 / 5
Max Draft:	6' 2"	Fuel Type:	Diesel
Water:	470 G (1779.14 L)	Fuel:	3566 G (13498.77 L)

**\$3,900,000**



## Data Sheet

Category: Flybridge  
Subcategory: Motor Yachts  
Condition: Used  
Model Year: 2013  
Beam: 23'11" (7.29m)  
Max Draft: 6' 2" (1.88m)  
LOA: 107' (32.61m)  
Cabins: 5  
Sleeps: 10  
Pullmans: 2  
Twin Berths: 2  
King Berths: 3  
Full Beam Master: Yes  
Head Room: 7' 3"  
Heads: 5

Crew Sleeps: 6  
Maximum Speed: 19 Knots  
Cruise Speed: 15 Knots  
Fuel Type: Diesel  
Hull Material: Other  
Special Offer: Yes  
Air Conditioning: Yes

Gross Tonnage: 195  
Stabilizers: Standard  
Stabilizer Brand: Trac  
Bow Thruster: Yes  
Stern Thruster: Yes  
Fuel Tank: 3566 gal (13498.77 liters)  
Fresh Water: 470 gal (1779.14 liters)  
Holding Tank: 980 gal (3709.7 liters)  
Builder: Vicem  
Designer: Vicem  
Interior Designer: Vicem

## Engines/Generators

### Engine 1

Caterpillar  
C32  
1550HP

### Generator 1

Kohler  
28KW

## Summary/Description

MONI 107' 2013 Vicem Motor Yacht is an elegant and spacious yacht featuring high headroom throughout, large windows and shallow draft. Unusual for a yacht this size, 107' MONI is able to welcome up to 10 guests, with five spacious cabins, huge feature for a yacht this size.

**Beautiful, high headroom, world-class interior with shallow draft yacht in excellent condition.**

### KEY SELLING FEATURES for MONI 107' 2013 Vicem Motor Yacht:

- Owner Financing Available
- Very High Ceilings: Minimum Head Room Throughout 7'3" (In some staterooms goes up to 9')
- Gorgeous finishes throughout
- 5 Staterooms up to 10 Guests
- Jacuzzi
- Full Beam, Spacious Master Stateroom with Large Windows
- Inviting Interior Spaces
- Impeccably Maintained by Long Time Crew
- Caterpillar power
- On deck galley
- Wide Swim Platform

An elegant and spacious 107' 2013 Vicem Motor Yacht. Design work is by the Vicem team, and she features high headroom throughout, large windows and shallow draft. Unusual for a yacht this size, 107' MONI is able to welcome up to 10 guests, with five spacious cabins, MONI carries a crew of up to six. Guest accommodation includes the large full beam master cabin, with high windows and luxurious fittings, two VIPs and two twins. All cabins feature full entertainment systems.

Indoor and outdoor spaces abound, with exceptionally high ceilings providing a feeling of added space throughout the interior. The large main salon is the heart of the yacht and features timeless yet contemporary styling and luxurious fittings to create a true retreat for guests to relax or socialize. An elevated dining space sits up a level, with a full formal dining table for 10 and a raised ceiling that gives an open and spacious feel. A fully equipped modern galley is nearby for seamless service, while far forward on the main deck is the pilothouse.

Outside spaces include the main aft deck, with a sheltered al fresco dining set up that offers sweeping views. The main forward deck is home to expansive sun pads and seating – a popular spot to retreat to – and even two hammocks. A favourite space is the expansive flybridge, with its many amenities. These include lounge seating and a dinette, a sit down bar, inviting Jacuzzi and sun loungers. A pop up outdoor television allows guests to enjoy sunset movie sessions.

A generous swimming platform is the main base for guests to enjoy time in and on the water. MONI 107' 2013 Vicem Motor Yacht has plenty of storage and can carry an extensive water toy inventory.



Well maintained throughout her lifetime, in the hands of her long term crew, she is in beautiful condition. Powered by twin Caterpillar C32 engines, MONI 107' 2013 Vicem Motor Yacht cruises at 15 knots, reaching maximum speeds of 19 knots.

*Please see Virtual Tour Links for more details on MONI 107' Vicem Motor Yacht.*

## **WALK THROUGH: MONI 107' 2013 Vicem Motor Yacht**

### **WALK THROUGH: MONI 107' 2013 Vicem Motor Yacht**

#### **MAIN AFT DECK**

Comfortable seating for 8 with a refrigerator and storage cabinet to starboard and stairs with bridge access to port.

#### **MAIN SALON & DINING**

Entering the Salon from the aft you will find a stunning, contemporary Salon with extensive use of wood and fabric to create an elegant and comfortable space. The large windows provide excellent viewing throughout. Up 2 steps from the Salon is the Dining area with seating for 10. This area has a raised ceiling making the area open and spacious. One will enjoy the high ceilings throughout.

Forward is the Galley, Dayhead and stairs to lower guest staterooms. All the way forward on the Main Deck is the Pilot House with a comfortable seating arrangement and 2 Captains chairs for a bird's eye view of the navigation. MONI boasts state of the art systems onboard.

#### **LOWER DECK**

Coming down the stairs from the Main Deck you enter the Owner and Guest Staterooms. To aft is the Owner's large stateroom. Once again, the extensive use of wood combined with the large window and beautiful stone work in the head creates an open yet elegant feeling. Forward to port and all the way forward are 2 VIP Staterooms that provide comfort and tranquility for your guests. To starboard are two smaller staterooms with twin bunks that share a head.

#### **FLYBRIDGE**

This large area has a beautiful lounging space and full sitdown bar to port. Forward is the upper Helm Station. Behind this is an oversized seating area perfect for a casual lunch at anchor or dining under the moonlight. Further aft is the hot tub and open deck space for lounging in the sun.

#### **FORE DECK**

All the way forward on the Main Deck is a spectacular sunning area complete with 2 hammocks for relaxing in the sun.

## **SPECS: MONI 107' 2013 Vicem Motor Yacht**

MECHANICAL AND ENGINE EQUIPMENT: MONI 107' 2013 Vicem Motor Yacht

- Twin Diesel Caterpillar C32 1550 hp
- Engine Hours: Port 2605 / Stbd 2605
- Twin Diesel Kohler Generator 28 Kw @ 50 Hz, 220/380V AC, 3 Phase (2)



- Generator Hours: Port 2767 / Stbd 2767
- Chilled water air conditioning system – Cruisair 216.000 BTU/hr with TWC tempering units and AT blowers
- Electrical capstans – Lofrans 24V DC
- Engine instrumentation at helm, start/stop with electronic digital/analog displays
- Engine room fire suppression and engine shut-down system
- Engine throttle and gear shift controls, joystick assembly, ZF, two station, electronic with synchronizers
- Engine transmission gear, ZF, 2050A, incorporated into CAT 32 1550 BHP
- Fire dampers – Gianneschi for engine room air intakes, remote controlled 24V DC
- Fire extinguisher for galley, engine room and staterooms
- Fire fighting and bilge pumps – Gianneschi 24V DC (1) and 380V AC, 3 Phase 50 Hz (1)
- Fresh water filters – Headhunter UV filter and General Ecology system
- Fuel Filters – Racor – double water separators for engines with metal bowls and water detection module
- Fuel Filters – Racor – single water separators for generators with metal bowls and water detection module
- Fuel Piping – stainless steel with main remote electric actuated control valve
- Fuel Tanks – baffled in stainless steel 316L
- Hydraulic bow and stern thrusters – Trac 16' 65 hp
- Hydraulic stabilizer system – Trac 300 with 9 x fins and Winglet
- Hydraulic windlass – Data DZC 22000 HKR-16K, 316L grade stainless steel with chain stopper
- Oil change system
- Propellers – fixed pitch, 5 blade, NiBrAl nickel-aluminum, bronze
- Seacocks – exterior hull strainers for raw water intakes, Groco, bronze
- Shaft seals – Tides Marine – drip-less lip seals, spare seal installed
- Tank fills for fuel, fresh water, grey and black water tanks – stainless steel Whitecap
- Trim tabs – BCS – stainless steel with twin actuators double station with indicators
- Water Maker – Bluewater Legend LX 3840 gallons per day – 221 380V AC, 50Hz 3 Phase
- Waste treatment plant – Super mini plus 2118 230V AC, 50 Hz 1 Phase

#### ELECTRICAL EQUIPMENT

- AC Electrical System 220/380V AC, 50hz, 3 Phase
- Battery management panel, AC ships system panel
- Bonding system – all metal parts below water line
- Cable Master – Glendining, 50A, 75 ft
- Circuit breaker panels
- Compass – Ritchie (2) located at helm consoles
- LED courtesy lights – Cantalupi Macro Q36
- LED exterior and heads ceiling lights BCM Calipso
- LED overhead lights – Cantalupi, TAP CLL and TIP CLL
- LED reading lights – BCM, Mini
- LED rope and linear lights
- LED step lights – Cantalup, Lecce 43
- Navigation Lights – Lopolight, LED 24V DC
- Searchlight – ACR Electronics, ACR RCL-300A, 24V DC remote, twin
- Shore power cables and inlets – Hubbell, twin 50 AMP with 75 ft cable, yellow
- Shore power isolation transformer
- Underwater lights – Cantalupi (9)
- ASEA Shorepower frequency converter

#### ELECTRONICS

- Raymarine Camera T350 thermal

- Raymarine Camera 100 PAL
- Raymarine command center keyboard (wired), G-Series
- Raymarine command center keyboard with wireless base station, G-Series
- Raymarine Depth, speed and wind transducer pods ST70
- Raymarine Digital sounder module DSM300
- ACR Rlb35
- Raymarine Glass bridge monitor (17") and European version processor module, G-Series
- Raymarine GPS Receiver Raystar 125 plus
- GMDSS 1600E
- Raymarine HD digital 48" open array radar scanner with 4kW pedestal
- Raymarine instrument display and instrument keypad ST70+
- Raymarine multifunction 14" display E-Series, E140W
- Raymarine ST70+ power pilot keypad
- SART, ACR, Pathfinder 3
- SAT TV antenna system, Raymarine 60 STV-EU premium, quad LNB skew control
- Raymarine smart pilot core pack Spxsol
- Navtex, JMC, Yacht Trek

## ENTERTAINMENT SYSTEMS

### *SALON*

- Samsung 55D8000 55" UHD TV
- Yamaha RX-V667 AV Receiver
- Yamaha BD-S667 Bluray Player
- WD Live Media Player
- Sonos ZP90 Zone Player
- Sonos WD100 Dock
- Atlanta 800HD SAT Receiver
- Philips Pronto TSU9600 Touch Screen Remote
- Philips Pronto RFX9600 Extender
- WD My Book Live 2TB Harddisk, 3COM

### *COCKPIT and FLYBRIDGE*

- Sonos ZP 120Zone Player
- Access Point 54Mbps
- Bose Model 131 Speakers (6)

### *WHEELHOUSE*

- Speaker Craft CR6-Zero Speakers (2)

### *MASTER STATEROOM*

- Samsung 40D8000 40" UHD
- Samsung MM-C430D Micro System
- Atlanta 800HD SAT receiver
- WD My Book Essential 3TB Harddisk

### *PORT and VIP GUEST STATEROOMS*

- Samsung UN32D6000 32" UHD
- Samsung MM-C430D Micro System
- Atlanta 800HD SAT Receiver

#### STARBOARD GUEST STATEROOMS

- Samsung 22C4000 22" LED TV
- Samsung MM-C430D Micro System
- Atlanta 800HD SAT Receiver

#### DECK EQUIPMENT MONI 107' 2013 Vicem Motor Yacht

- Anchor chains and swivels, 150m
- Anchors, Pool N type, stainless steel, twin (140kg and 190kg)
- Hydraulic windlass, Data, DZC 22000 HKR-16K, 316L grade stainless steel with chain stopper
- Sun awnings for windshields
- Swim ladder, stainless steel
- Tender crane, 600 kg capacity
- Transformer swim platform, Opacmare 3382/40
- Hydraulic windlass, Data DSZ 22000 HKR-16K, 316L grade stainless steel with chain stopper
- Windows, tempered and direct glazed

#### FLY BRIDGE

- Additional icemaker, drawer refrigerator, built-in cooling box and double electric grills on flybridge
- Helm station equipped with electronics, helm panel, indication, controls and double standard helm seat

#### GALLEY

- Gaggenau Df 461 161 Dishwasher, fully integrated, 220V AC 50Hz
- Gaggenau Vario Rf461 200 Freezer, fully integrated, 220V AC 50Hz
- Wolf Induction Cooktop, 220V AC 50Hz
- Gaggenau Eb 385 110 Stainless Steel Oven, 220V AC 50Hz
- Gaggenau Aw 220 170 Stainless Steel wall-mounted hood, 220V AC 50Hz

#### DAY HEAD

- Tecma Privilege 24V head with bidet shower function and LED central panel, soft closing system

#### STAIRCASE/HALLWAY

- Escape hatch with roof ladder system, stainless steel
- Ariston ARML 129 Washer and Dryer (for stateroom use only)

#### MASTER STATEROOM

- Head, Tecma Privilege, 24 V with bidet shower function and premium control panel, soft closing system
- Safe
- Shut-off valve kit and basic module, Hansgrohe Axor Starck 1097200, chrome
- Walk-in closet with special shelf system
- Desk

#### PORT & VIP STATEROOMS

- Berth, Island Queen with lift up storage, upholstered headboard
- Hand shower, hansgrohe Axor Citterio 28519000 Raindance S 150 3jet (chrome) and shower support
- Tecma Privilege 24V head with bidet shower function and premium control panel, soft closing system
- Night stands with storage
- Safe
- Shower module basic and finish set, Hansgrohe Axor Starck 28491000, Dn15/Dn20 chrome

#### CREW LOUNGE

- Miele heat pump tumble dryer
- Miele WKR 771 9.0 kg Washer
- Siemens Domino Et375gfl stainless steel electric cooktop, 220V AC 50Hz
- Tecma Privilege 24V head with bidet shower function and premium control panel, soft closing system
- Siemens Hfi5m561 stainless steel microwave oven, 800W, 17 Lt, 220V AC 50Hz
- 2 x Isotherm Cr130 24V DC Refrigerators

#### EXCLUSIONS

MONI is a registered name and does not convey. Exclusions are to include but are not limited to, all owner's personal items, Tenders and Waverunners are excluded from the sale.

A detailed list of exclusions will be provided at the time of sale, upon written request.

### **Mechanical Disclaimer**

Engine hours are as of the date of the original listing and are a representation of what the listing broker is told by the owner and/or actual reading of the engine hour meters. The broker cannot guarantee the true hours. It is the responsibility of the purchaser and/or his agent to verify engine hours, warranties implied or otherwise and major overhauls as well as all other representations noted on the listing brochure.

### **Disclaimer**

The company offers the details of this vessel in good faith but cannot guarantee or warrant the accuracy of this information nor warrant the condition of the vessel. A buyer should instruct his agents, or his surveyors, to investigate such details as the buyer desires validated. This vessel is offered subject to prior sale, price change or withdrawal without notice.



PROFILE MONI 107' 2013 Vicem Motor Yacht



PROFILE MONI 107' 2013 Vicem Motor Yacht





BOW MONI 107' 2013 Vicem Motor Yacht



MONI 107' 2013 Vicem Motor Yacht





AERIAL MONI 107' 2013 Vicem Motor Yacht



SUN DECK MONI 107' 2013 Vicem Motor Yacht





SUN DECK MONI 107' 2013 Vicem Motor Yacht



SUN DECK LOUNGING MONI 107' 2013 Vicem Motor Yacht





SUN DECK DINING MONI 107' 2013 Vicem Motor Yacht



AFT DECK DINING MONI 107' 2013 Vicem Motor Yacht





BOW SEATING MONI 107' 2013 Vicem Motor Yacht



MAIN SALON MONI 107' 2013 Vicem Motor Yacht





MAIN SALON MONI 107' 2013 Vicem Motor Yacht



DINING MONI 107' 2013 Vicem Motor Yacht





DINING MONI 107' 2013 Vicem Motor Yacht



WHEELHOUSE MONI 107' 2013 Vicem Motor Yacht





WHEELHOUSE MONI 107' 2013 Vicem Motor Yacht



GALLEY MONI 107' 2013 Vicem Motor Yacht



MASTER STATEROOM MONI 107' 2013 Vicem Motor Yacht



MASTER BATHROOM MONI 107' 2013 Vicem Motor Yacht





MASTER STATEROOM MONI 107' 2013 Vicem Motor Yacht



VIP STATEROOM MONI 107' 2013 Vicem Motor Yacht





GUEST BATHROOM MONI 107' 2013 Vicem Motor Yacht



GUEST STATEROOM 3 MONI 107' 2013 Vicem Motor Yacht



GUEST STATEROOM 4 MONI 107' 2013 Vicem Motor Yacht



TWIN STATEROOM MONI 107' 2013 Vicem Motor Yacht





GUEST BATHROOM MONI 107' 2013 Vicem Motor Yacht

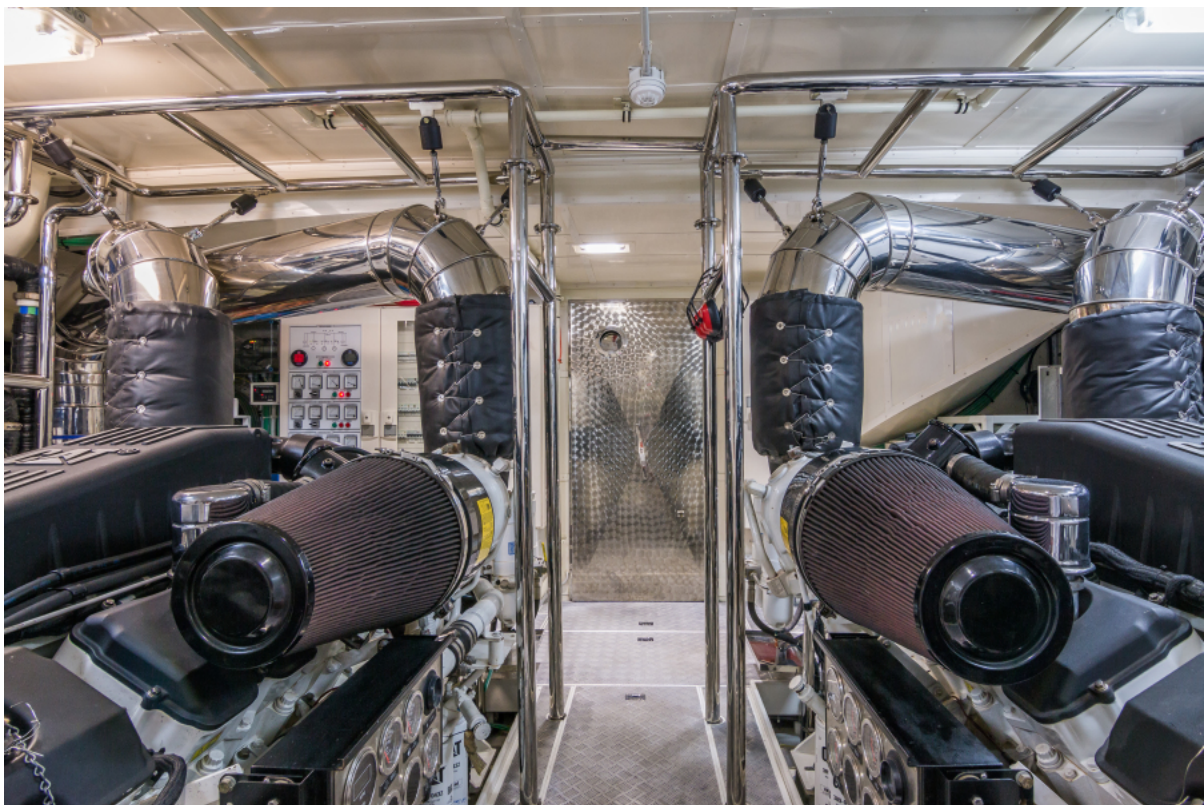


CREW MESS MONI 107' 2013 Vicem Motor Yacht





ENGINE ROOM MONI 107' 2013 Vicem Motor Yacht



ENGINE ROOM MONI 107' 2013 Vicem Motor Yacht





STERN MONI 107' 2013 Vicem Motor Yacht