



Desperado

43' (13.11m) 2002 Ocean Yachts Super Sport
Orange Beach Alabama United States



OVERVIEW

Manufacturer:	Ocean Yachts		
Engines:	2 Yanmar	Hull Material:	Fiberglass
Engine Model:	6CXM GTE	Cruise Speed:	
Engine HP:	465	Max Speed:	
Beam:	15' 2"	Cabins/Heads:	2 / 2
Max Draft:	3' 7"	Fuel Type:	Diesel
Water:	94 G (355.83 L)	Fuel:	438 G (1658.01 L)

\$249,000



Data Sheet

Category: Convertible Boats
Subcategory: Saltwater Fishing
Condition: Used
Model Year: 2002
Beam: 15'2" (4.62m)
Max Draft: 3' 7" (1.09m)
LOA: 43' 10" (13.36m)
Cabins: 2
Head Room: 6' 6"
Heads: 2

Fuel Type: Diesel
Deadrise: 7°
Hull Material: Fiberglass
Hull Shape: Modified Vee
Air Conditioning: Yes

Displacement: 37000 lbs
Fuel Tank: 438 gal (1658.01 liters)
Fresh Water: 94 gal (355.83 liters)
Builder: Ocean Yachts
HIN/IMO: XYU04143F102

Engines/Generators

Engine 1

Yanmar
6CXM GTE
Inboard
465HP
Fuel: Diesel
Hours: 1500
Year: null
Location: Port

Engine 2

Yanmar
6CXM GTE
Inboard
465HP
Fuel: Diesel
Hours: 1500
Year: null
Location: Starboard

Generator 1

Westerbeke
7.6kw

Summary/Description

This 2002 43 Ocean Super Sport is the boat you have always wanted! Recently painted from the rubrail down and sparkles top to bottom. Fresh mechanical service in August 2019!

This 2002 43 Ocean Super Sport is the boat you have always wanted! Recently painted from the rubrail down and sparkles top to bottom.

Fresh mechanical service Fall 2020.

Above average performance with the optional upgraded twin Yanmar 465 hp Yanmar Diesel engines with 1,500 hours. Nicely finished, upgraded interior with a spacious salon and an innovative two stateroom/two head layout. "Desperado" has a uniquely laid-out master stateroom forward with side angled bed and private head and shower in the forepeak. Built on a tapered, modified-V hull with a shallow keel and well flared bow the 43 SS comes with a long list of standard equipment. Her spacious two stateroom floor plan is arranged with a private head in the master stateroom at the bow and twin single berths in the guest cabin. The wide open salon is created by extending the house well forward on the foredeck and tucking the guest stateroom under the galley. The cockpit has a freezer, huge fish box, transom live well with tuna tubes, washdowns, tackle storage, and a tuna door at the transom. A fighting chair is kept safe in storage offsite and conveys with the sale.

Accommodations

Stepping on board the vessel via an optional swim platform, you enter the large cockpit through the boat's tuna door. The cockpit is set up to fish, with a full size fighting chair, fish box, freezer and a live well with removable tuna tubes installed. Across the back of the cockpit, you have engine room access, salon entryway and a ladder to the bridge. The flybridge has two comfortable helm chairs, as well as bench seats to port and forward of the helm. From the cockpit, there is a sliding door leading into the salon. The salon boasts a large L-Shaped sofa to port, with a deck house galley forward. To starboard, there is a dinette with settee forward and cabinets to starboard aft. Moving down the companionway, there is a guest stateroom with bunks to port and a day head to starboard. The guest stateroom has a closet that was converted into custom reel storage. Finally, in the bow there is a master stateroom with an en-suite master head in the fore peak.

Salon

- L-Shaped leather couch with storage
- Pullout bed with air mattress
- Salon VHF
- Folding salon table
- Swivel chair
- Ice maker
- Breaker panel
- LED Accent lighting
- LED Overhead lighting

- Teak and holly flooring with canvas runner

Dinette

- Leather wraparound sofa
- Dinette table
- Storage underneath
- LED lighting overhead and accent
- Flat Screen TV

Galley

- White Corian countertops
- (2) Stainless steel drawer style refrigerator (2017)
- (2) Stainless steel drawer style freezer (2017)
- Brushed nickel faucet with hose nozzle
- (2) Burner Kenyon electric cooktop
- Above and below cabinet storage
- Recessed microwave
- Teak and holly flooring
- LED overhead lighting
- LED accent lighting

Master Stateroom and Head

- Queen size bed
- His and Her cedar lined closets
- Custom rod storage in aft closet
- Flat Screen TV
- Storage below bed and to port
- Carpet with bilge access panels

Master Head:

- Folding shower doors into stand-up shower
- Vanity with sink and storage above and below
- Vacu-flush head
- Corian countertops

Guest Stateroom and Head

- Twin bunks side by side with insert to convert to queen
- Cedar lined closet with custom reel storage

Guest Head:

- Shower with acrylic swinging door
- Corian countertops
- Under mounted sink
- Vanity
- Splendide washer dryer combo
- Vacu-flush head

Helm

- (2) Garmin 7612xsv multifunction displays
- Garmin autopilot
- Dual VHF radios
- Analog engine gauges
- Compass
- (2) Pompanette helm chairs
- Bench seating port and forward
- Full wraparound isinglass enclosure
- Hardtop hatch vent
- Fusion stereo system with Fusion speakers

Electrical System

- 50 Amp Shore Power Cord
- Cablemaster
- Westerbeke 7.6kw Generator
- Battery charger

Engine Room

- (2) Yanmar 6CXM GTE diesels 465HP each: Turbocharged and Intercooled
- ZF Marine 280A 2:1 transmissions
- Fire extinguisher

- Racor fuel filters
- Oil change system
- (2) Garmin engine room cameras
- PSS dripless shaft seals

Cockpit

- Full size fighting chair
- Full size fish box with port and starboard deck hatches
- Lazarette access
- Integrated steps towards bow
- Freezer with bait-box insert
- Fresh and salt water washdown
- Freshwater sink
- Gaff storage under gunwales
- Tuna tubes in live well
- Gunwale mounted rod holders

Deck

- New outriggers (2016)
- Bomar hatch on bow above master stateroom
- Bow rail
- Windlass with remote control
- Fortress anchor
- Non-Skid deck finish

Hull

- Custom gray paint job (2017)
- Underwater lights
- Swim platform
- Trim tabs

Mechanical Disclaimer

Engine hours are as of the date of the original listing and are a representation of what the listing broker is told by the owner and/or actual reading of the engine hour meters. The broker cannot guarantee the true hours. It is the responsibility of the purchaser and/or his agent to verify engine hours, warranties implied or otherwise and major



overhauls as well as all other representations noted on the listing brochure.

Disclaimer

The company offers the details of this vessel in good faith but cannot guarantee or warrant the accuracy of this information nor warrant the condition of the vessel. A buyer should instruct his agents, or his surveyors, to investigate such details as the buyer desires validated. This vessel is offered subject to prior sale, price change or withdrawal without notice.





Starboard Bow



Profile





Salon Forward



Salon Starboard



Salon Aft



Salon Table



Galley



Galley Refrigeration



Microwave



Electrical



Master Stateroom



Master Entertainment And Closets



Master Head With Separate Shower



Guest Stateroom Double Bunks



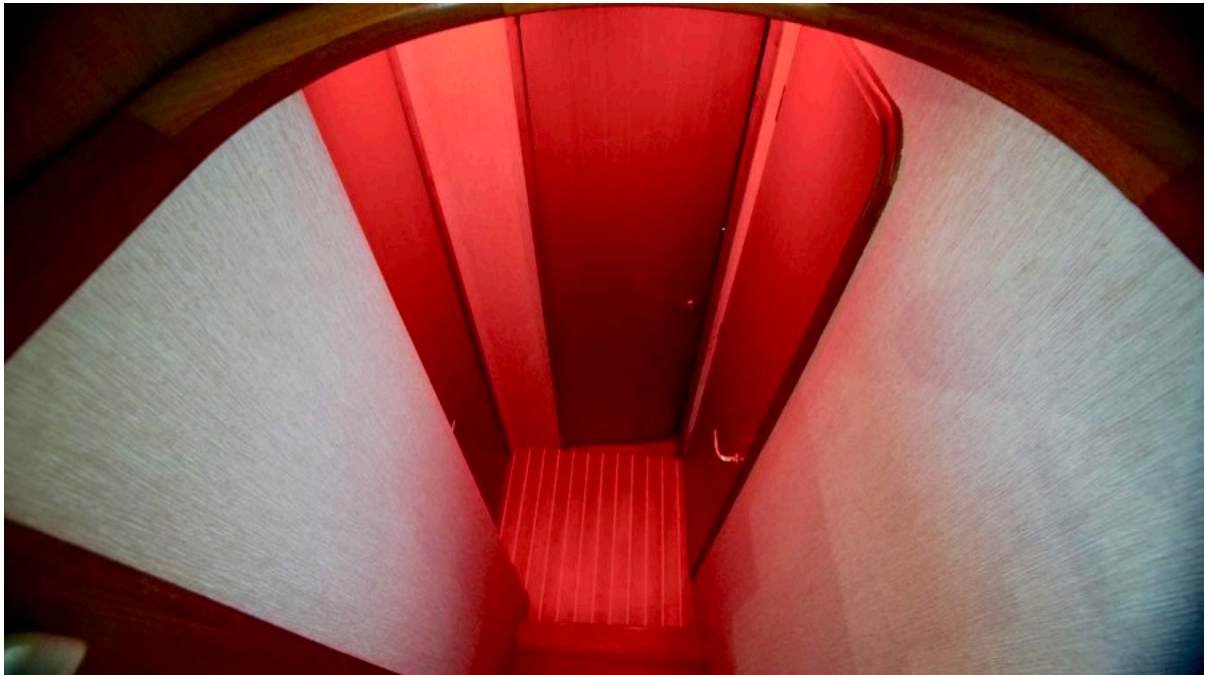
Guest Stateroom Center Filler With Red LED



Guest Stateroom Reels With Detachable Butt Storage



Guest Head With Separate Shower



Companionway Red LED

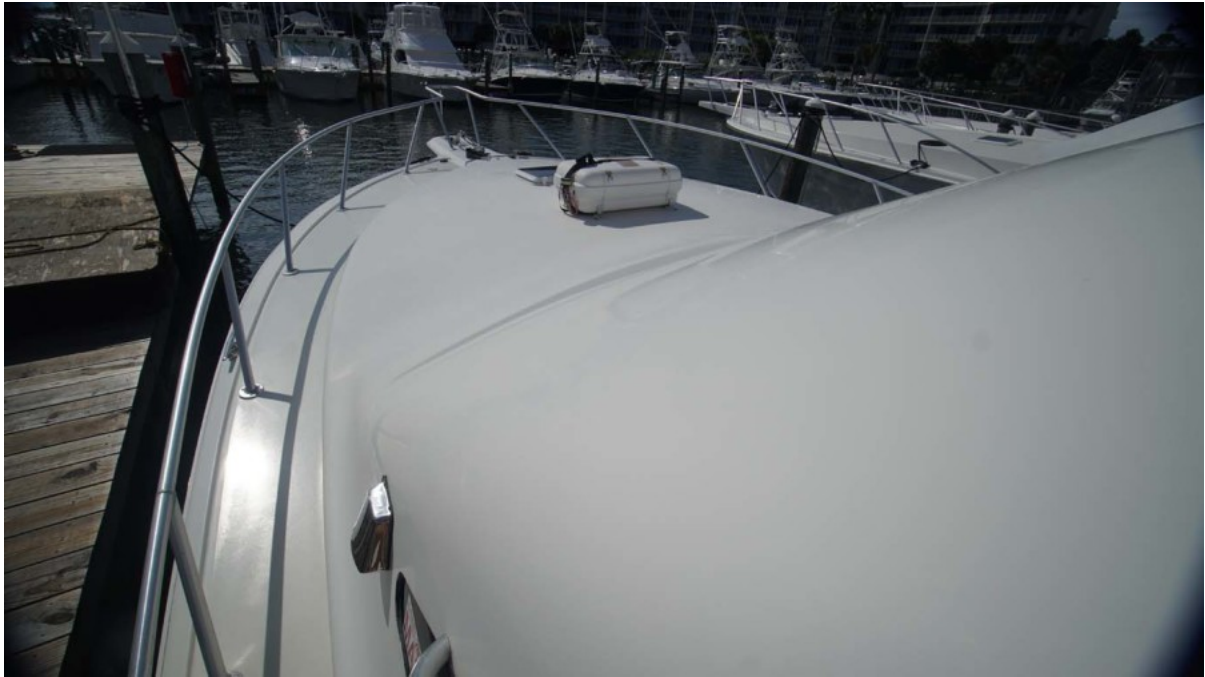


Companionway Blue LED



Foredeck Looking Aft





Foredeck Shine



Bridge Access



Bridge Enclosure



Bridge Seating



Forward Seating



Bridge





Garmin Electronics



Instrument Cluster



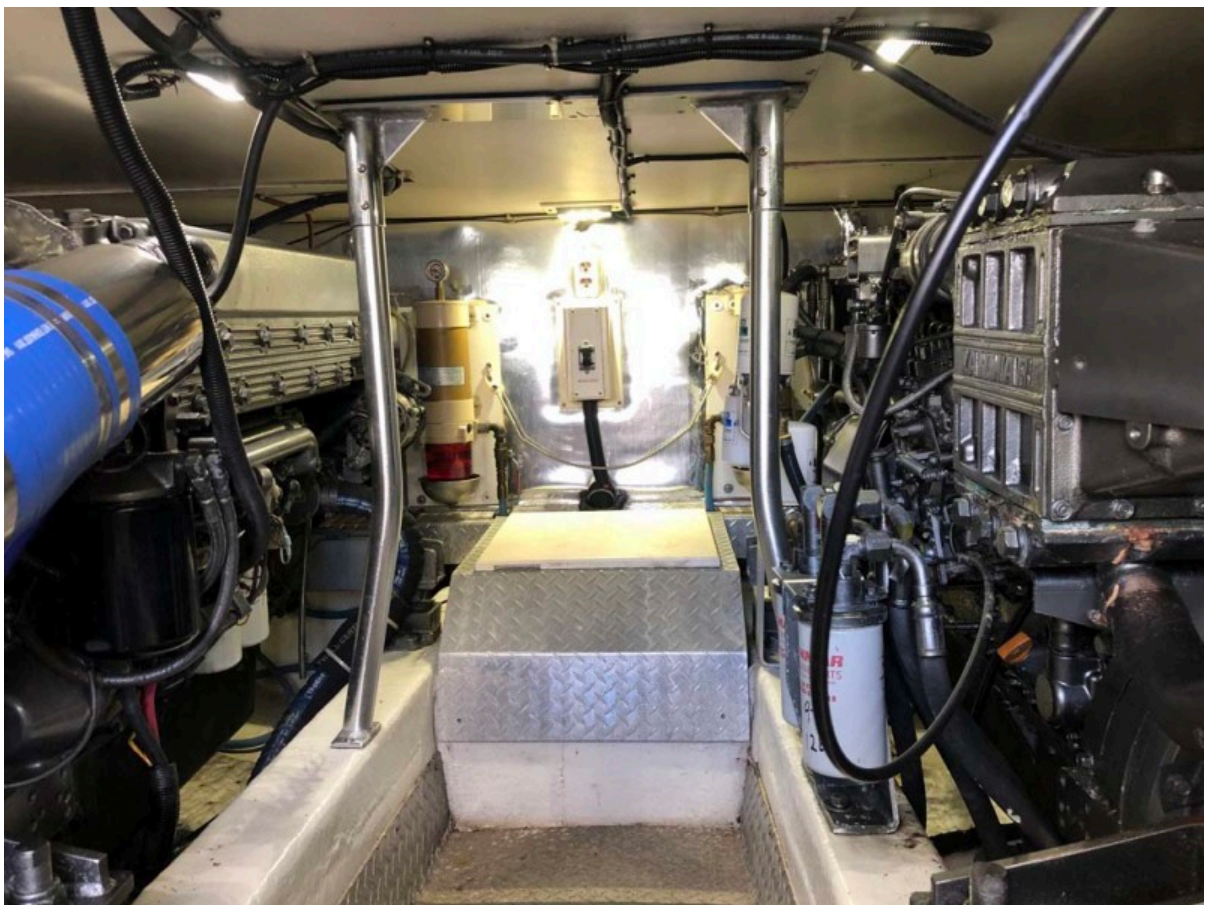
Upper Electronics



Cockpit Shade



Engine Room Aft



Engine Room Forward



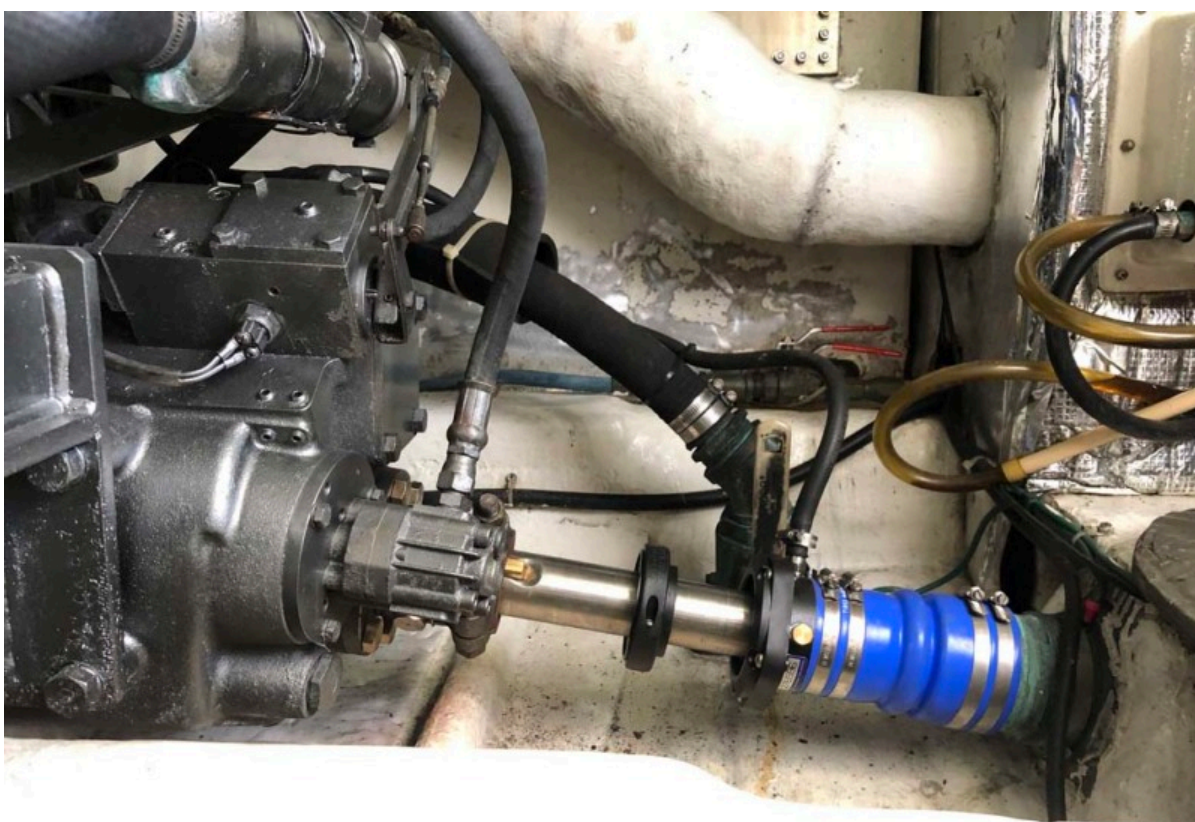
Air Conditioners



Generator



Port Transmission And Dripless Shaft Seal



Starboard Transmission And Dripless Shaft Seal



Port Yanmar



Port Yanmar



Starboard Yanmar



Bow



Starboard Aft Quarter