



# Impulse II

54' (16.46m) 2001 Sea Ray 540 Sundancer  
Cape Coral Florida United States



## OVERVIEW

Manufacturer:	Sea Ray	Hull Material:	Fiberglass
Engines:	2 CAT	Cruise Speed:	
Engine Model:	3196TA	Max Speed:	
Engine HP:	0	Cabins/Heads:	2 / 2
Beam:	15' 11"	Fuel Type:	Diesel
Max Draft:	"	Fuel:	600 G (2271.25 L)
Water:	150 G (567.81 L)		

**\$248,500**





## Data Sheet

Category: Express Cruiser  
Subcategory: Cruisers  
Condition: Used  
Model Year: 2001  
Beam: 15'11" (4.85m)  
Min Draft: 3' 11" (1.19m)  
LOA: 54' (16.46m)  
Cabins: 2  
Sleeps: 5  
Heads: 2

Fuel Type: Diesel  
Hull Material: Fiberglass  
Hull Shape: Modified Vee  
Hull Finish: Gelcoat

Displacement: 39000 lbs  
Fuel Tank: 600 gal (2271.25 liters)  
Fresh Water: 150 gal (567.81 liters)  
Holding Tank: 68 gal (257.41 liters)  
HIN/IMO: SER0854B101  
Stock #: BR4728-DHOW/GAW

## Engines/Generators

### Engine 1

CAT  
3196TA  
Inboard  
Fuel: Diesel  
Hours: 1160  
Location: Port

### Engine 2

CAT  
3196TA  
Inboard  
Fuel: Diesel  
Hours: 933  
Location: Starboard



## Summary/Description

For Sale

This 2001 540 SEA RAY SUNDANCER, Impulse II, is a VERY POPULAR MODEL IN VERY NICE CONDITION

Twin CAT 3196TA 660 HP 1160 Hrs

Aftercoolers Serviced Dec 2018

Westerbeke 15Kw Diesel Generator in Sound Box

Bow Thruster

Hydraulic Swim Platform

SAT/TV

Spacious 2 Stateroom 2 Head Layout

Midships Master Stateroom

Electric Foldout Salon Sofa

Ultraleather Upholstery

Electric Cockpit Sunpad

Cockpit Wet Bar

Glendenning Cablemaster

Central Vacuum System

## Vessel Walkthrough

Step aboard her oversized hydraulic swim platform/lift suitable for a large dinghy or personal watercraft. The spacious lower cockpit is equipped with aft facing seating, an aft couch that electronically folds down into a sun pad and a wet bar with refrigerator and icemaker. Forward to the helm station and companion seating, the helm console is equipped with a bow thruster, radar and autopilot and more. The cockpit has its own dedicated reverse cycle air conditioning. The cabin features high gloss cherry wood cabinetry, plush furnishings, decorator fabrics and premium hardware and fixtures. There is a spacious salon including an electric slide-out bed to starboard and galley to port. The owners' stateroom is aft with en-suite head; the guest stateroom and head are forward.

## Salon

The beautifully finished cabin features a complete lineup of entertainment equipment, including SAT TV and a huge sofa that converts by push of a button into a double berth.

- Ultra Leather Sofa with Electric Slide Out Bed
- Television in Cabinet w/Remote

- KVH SAT TV
- Direct TV SAT Receiver, VCR
- Fabric Day and Night Shades w/ Drape Trim
- Overhead Storage Cabinets
- Storage Cabinets for CDs and Videos
- End Table w/Solid Surface Top
- Glass and Bottle Storage
- Overhead Hatch with Oceanair Screen/Shade
- (2) Opening Portlights
- Skylight with Cover
- Carpet
- Central Vacuum System
- Privacy Curtain, for Private Access to Forward Head from Forward Stateroom
- Mirrored Wall Accents

## Galley

The spacious galley has ample counter and storage space and is equipped with a full complement of appliances.

- Upright Refrigerator/Freezer w/Icemaker
- Recessed Glass 3 Burner Cooktop w/Cover
- Built-in Microwave/Convection Oven
- Built-in Coffeemaker
- Custom-Molded Fiberglass Countertop
- Sink w/Grohe Faucet and Cutting Board/Cover
- Storage Cabinets, Upper and Lower
- Water Heater
- Dockside and Pressure Water
- Storage, Glass & Dish Storage, Drawers w/Cutlery Inserts
- Fabric Day/Night Shades w/Drape Trim
- (2) Opening Portlights
- Wood Floor
- Storage, In-Floor
- Trash Receptacle w/Chute and Cover
- Water Filtration System

## Master Stateroom

The large master stateroom features a queen size island berth, plenty of storage and ensuite head. Island Berth, Queen Sized w/Innerspring Mattress and Gas-Assisted Hatch for Carpeted Storage Below

- Decorator Spread, Shams and Pillows
- Hanging Locker, Full-Length Cedar-Lined w/Lights & Mirrored Door
- Vanity w/Beveled Mirrors and Drawers Below
- Private Access to Head and Shower
- Privacy Door w/Mirror
- TV/VCR/Radio Combo in Cabinet
- Reading Lights
- Portlight with Curtains





- Skylight w/Cover
- Carpet with Clear Cover

## Master Head

The Master bath has a separate shower stall with seat.

- Shower w/Seat, Adjustable Shower Wand & Circular Acrylic Door
- Vanity w/Solid Surface Countertop and Sink w/Grohe Faucet and Storage Below
- Medicine Cabinet - Mirrored
- Tile Flooring
- Portlight, Opening     VacuFlush Head
- Storage, Cabinet, above Head
- A/C Vent and Exhaust Fan
- Bath Accessories, Chrome & Gold

## Forward Guest Stateroom

- Pedestal Berth, Full Size with Decorator Spread, Shams and Pillows
- Drawers under Berth
- Hanging Locker, Full-Length Cedar-Lined w/Light & Mirrored Door
- Storage Cabinets
- Privacy Door with Mirror
- Carpet with Clear Cover
- Overhead Storage Cabinets
- TV/VCR/Radio Combo
- Reading Lights
- Overhead Hatch with Oceanair Screen/Shade
- Portlights (4) Fixed and Curtains
- Mirrored Rope Locker Bulkhead

## Guest Head

The Guest head has private access from the forward VIP stateroom as well as from salon

- Vanity w/Solid Surface Countertop and Sink and Storage Below
- Grohe Faucet
- Mirrored Medicine Cabinet
- Sepatate Shower w/Seat
- Circular Acrylic Shower Door
- Adjustable Shower Wand
- Tile Flooring
- VacuFlush Head
- Opening Portlight
- A/C Vent and Exhaust Fan
- Chrome & Gold Bath Accessories
- Access from Salon & VIP Stateroom

## Upper Cockpit and Helm

The all-weather helm features a fiberglass hardtop with 3 sided glass and canvas enclosure, power windshield vent, aft drop curtain, and dedicated cockpit reverse cycle A/C & heat.

- Hard Top w/Enclosure

- Dedicated Cockpit Air Conditioning
- Windshield, Tempered/Tinted Curved Glass w/Stainless Steel Frame
- Power Windshield Vent
- Windshield Cover
- Helm Console, with Engine Instruments, Gauges and Electronics
- Helm Wheel, Wood Accent and Tilt
- Helm Seat, Slide/Swivel w/Flip Up Bolster
- Companion Bench Seat
- Portside Sliding Acrylic Lockable Hatch to Salon
- Overhead Lights
- Wipers and Washers (2)
- Storage Cabinets
- Clarion AM/FM/CD Stereo
- Courtesy Lighting
- Drink Holders

## Electronics and Navigational Equipment

- CAT Engine Monitors
- Twin Disc Electronic Engine Controls
- Bow Thruster
- Radar, Open Array Raymarine
- Autopilot Raytheon ST 7000
- ST-60 Tri-Data Raymarine
- VHF/Hailer Ray220 w/Remote Speaker
- Sea Ray Systems Monitor
- Spotlight Control
- Engine Synchronizer
- Rudder Angle Indicator
- Compass
- KVH SAT TV
- Clarion AM/FM/CD Stereo
- Telephone/Intercom System
- Trim Tab Controls
- Windlass Control

## Lower Cockpit

This area seats many for relaxing, sunning and entertaining, complete with wet bar, refrigerator and icemaker plus climate control.

- 10' 3" West Marine Inflatable w/ 8HP Mercury 4 Stroke Outboard
- Hydraulic Swim Platform
- Cockpit, Self-Bailing Fiberglass w/Gas-Assisted Engine Room Service
- Hatch & Pivoting Stainless Steel Engine Room Ladder
- L-Shaped Rear Facing Seating
- L-Shaped Forward Facing Seating with Electrically Actuated Retractable Sunpad
- Table, Cockpit - Hi-Lo Fiberglass
- Wet Bar w/Sink and Trash Receptacle
- Refrigerator w/Freezer
- Icemaker

- Storage Cabinets, Port & Starboard
- Molded Cockpit Boarding Steps w/Storage Below, Port and Starboard
- Cockpit Cover
- Cockpit Carpet
- Hot & Cold Shower
- Freshwater Washdown & Dockside Inlet
- Courtesy Lighting
- Beverage Holders
- Transom Door

## Deck Equipment

- Hydraulic Swim Platform Lift with Remote
- Gel-Coat, Arctic White
- Bow, Deck and Handrails, 316 Stainless Steel
- Windlass, w/Foot Switches and Remote Control
- Anchor w/ Washdown
- Anchor Chain Locker
- Swim Platform, Integral w/Concealed Stainless Steel Ladder & Grab Handle
- Foredeck Sunpad, Stored Indoors
- Rod Holders (2)
- Fender Storage
- Spotlight w/Remote Control

## Engine and Mechanical

The engine room with diamond plate flooring is easily accessed through a hatch in the lower cockpit and is gel-coated and insulated.

- CAT3196TA 660 HP Diesel Power 1160/933 Hrs
- After Cooler Service Dec 2018
- Fire Suppression System - Automatic w/Diesel Shutdown & Override
- Bilge Pumps, 24V Automatic (4)
- Blowers, 24V Bilge (2)
- Crossover Fuel System
- Racor Fuel Filters
- Oil Changer System
- Ladder, Stainless Steel - Removable
- Lighting, 24V
- Engine Synchronizer
- Hydraulic Power Steering
- Hydraulic Trim Tabs
- Holding Tank w/Macerator and Pump Out
- Bilge Freshwater Hose & Spigot

## Electrical System

- 50 Amp 240V Shore Power System w/Shore Cord
- Glendenning Cablemaster
- Panels, DC and AC Distribution
- Westerbeke 15Kw Diesel Generator in Sound Box
- Batteries
- Cable Television and Phone Connectors w/Cords



- Water and Waste Tank Monitors
- Air Horn w/Accumulator Tank
- Battery Chargers, 12V and 24V





Sea Ray 540 Sundancer Profile



Salon





Galley



Master Stateroom





Helm



Cockpit





Salon



Salon





Salon



Salon





Salon



Salon





Salon



Galley



Galley



Master Stateroom





Master Stateroom



Master Stateroom



Master Head & Shower



Master Head & Shower





Master Head & Shower



VIP Stateroom



VIP Stateroom



VIP Stateroom





VIP Stateroom



VIP Stateroom





VIP Head & Shower



VIP Head & Shower



Helm



Helm





Helm



Helm





Helm



Cockpit



Windshield Cover



Foredeck



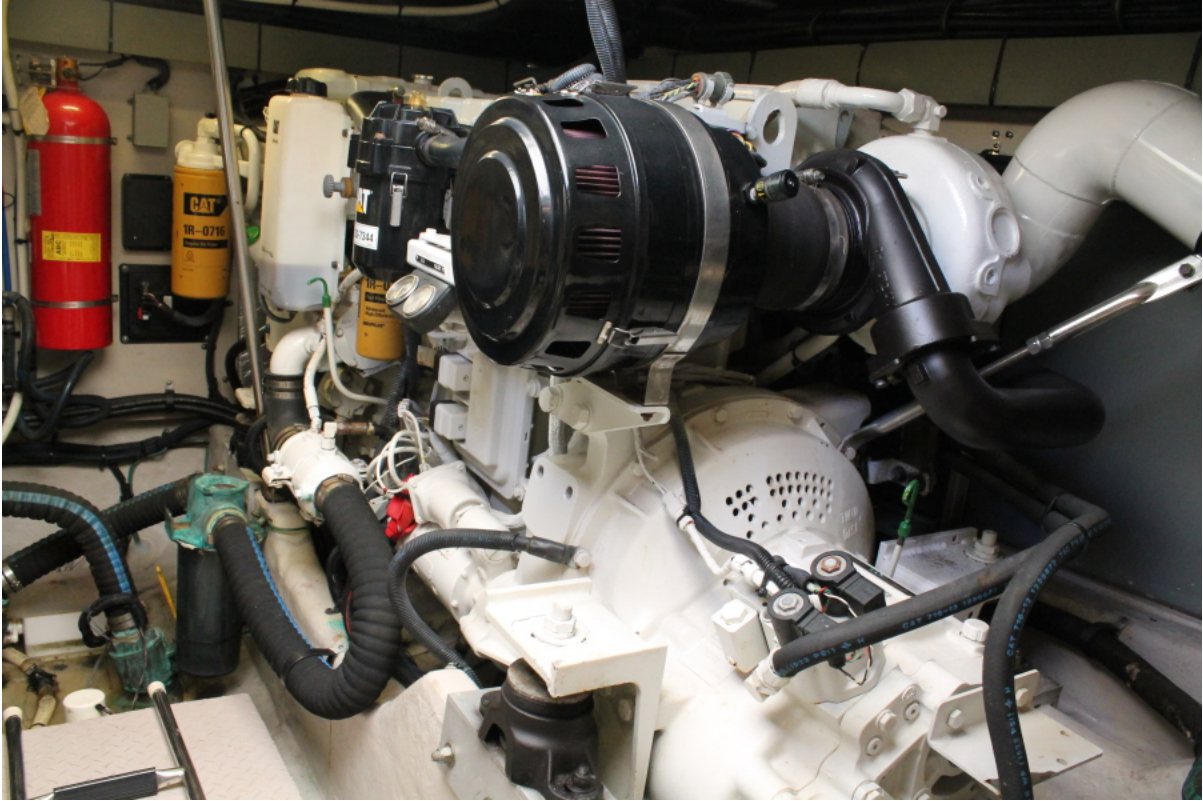


Anchor Locker

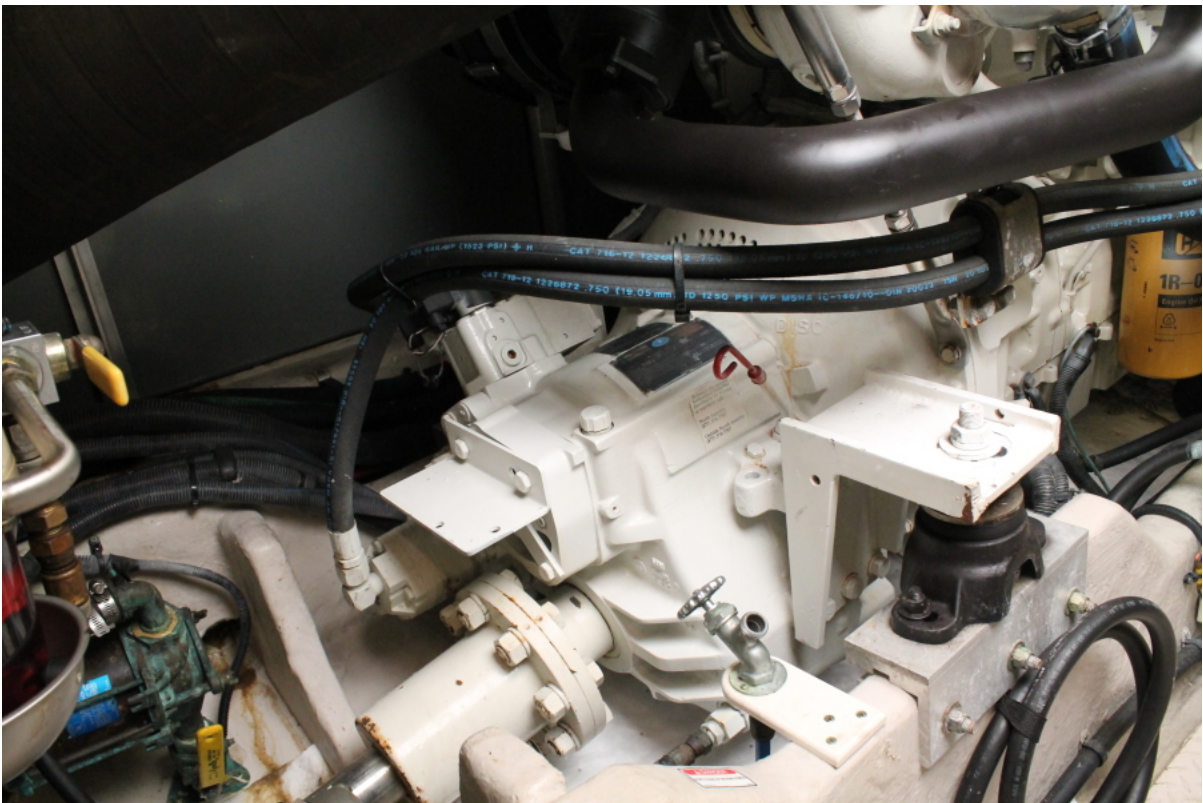


Port CAT 3196 TA 660HP



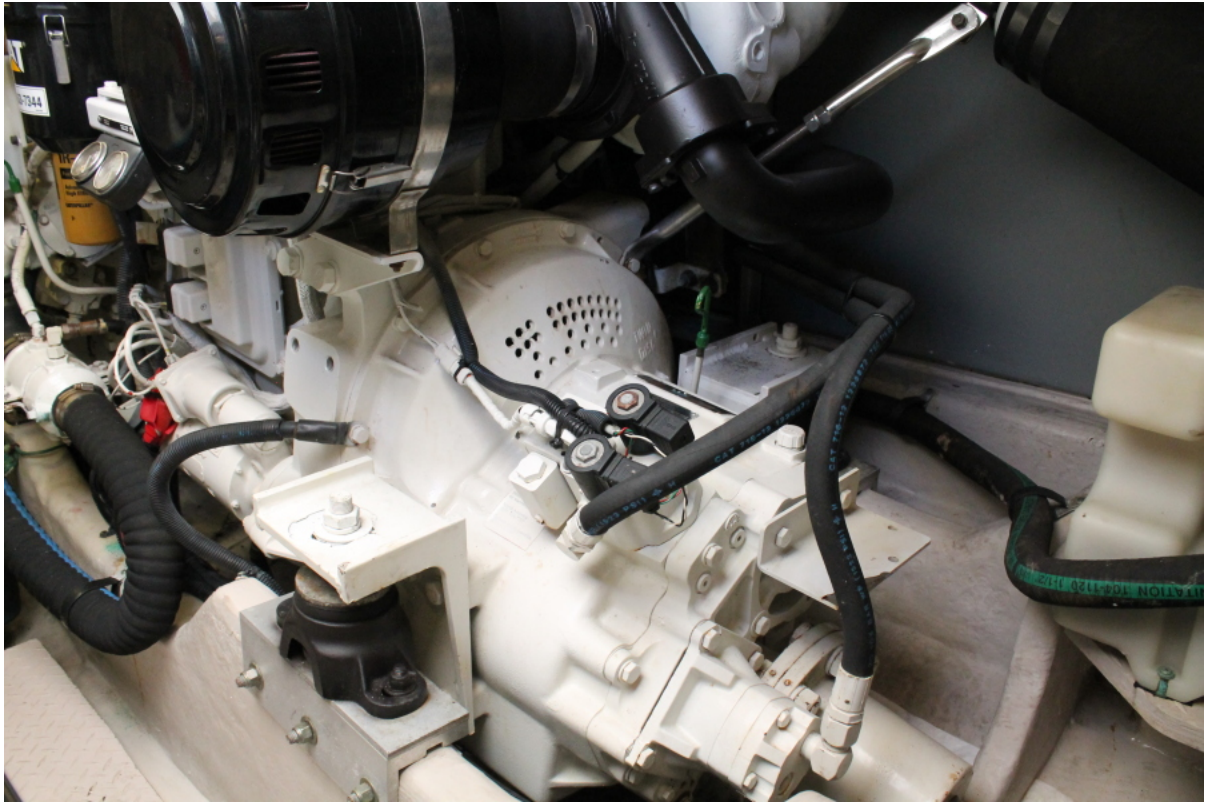


Starboard CAT 3196 TA 660HP



Port Gear



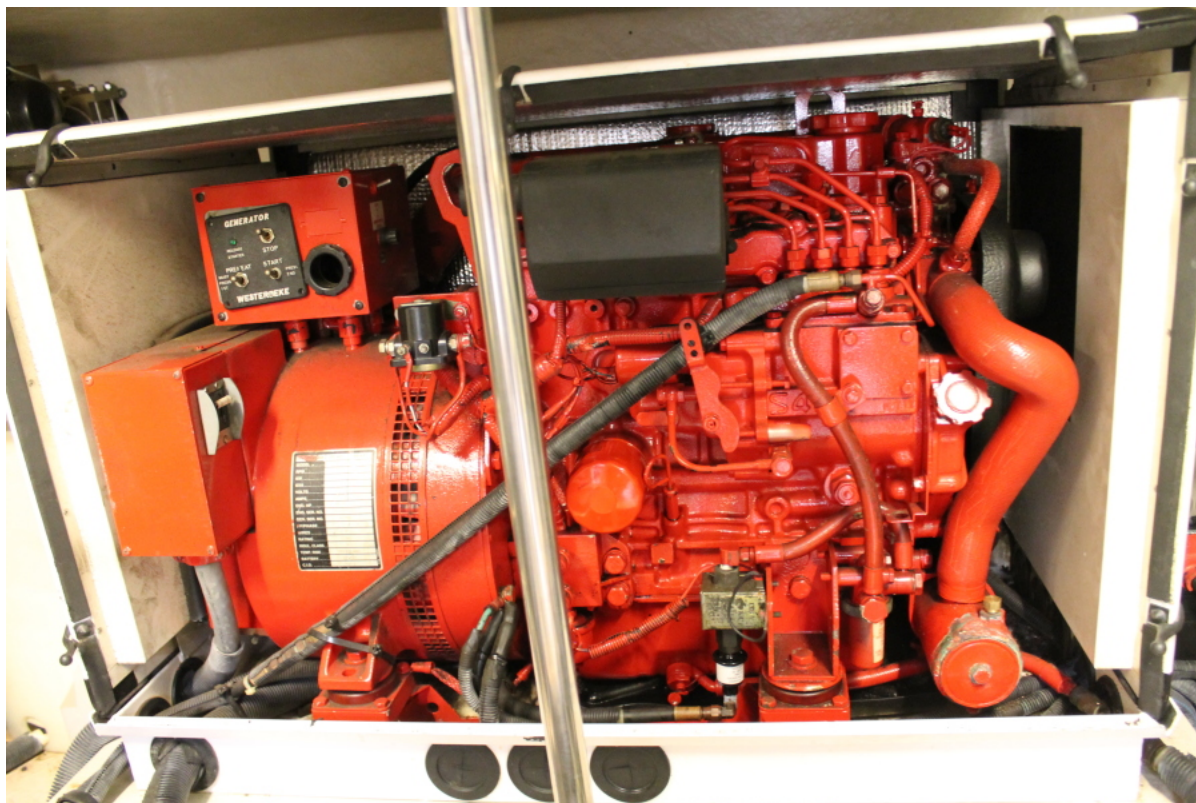


Starboard Gear



15KW Westerbeke & Soundshield



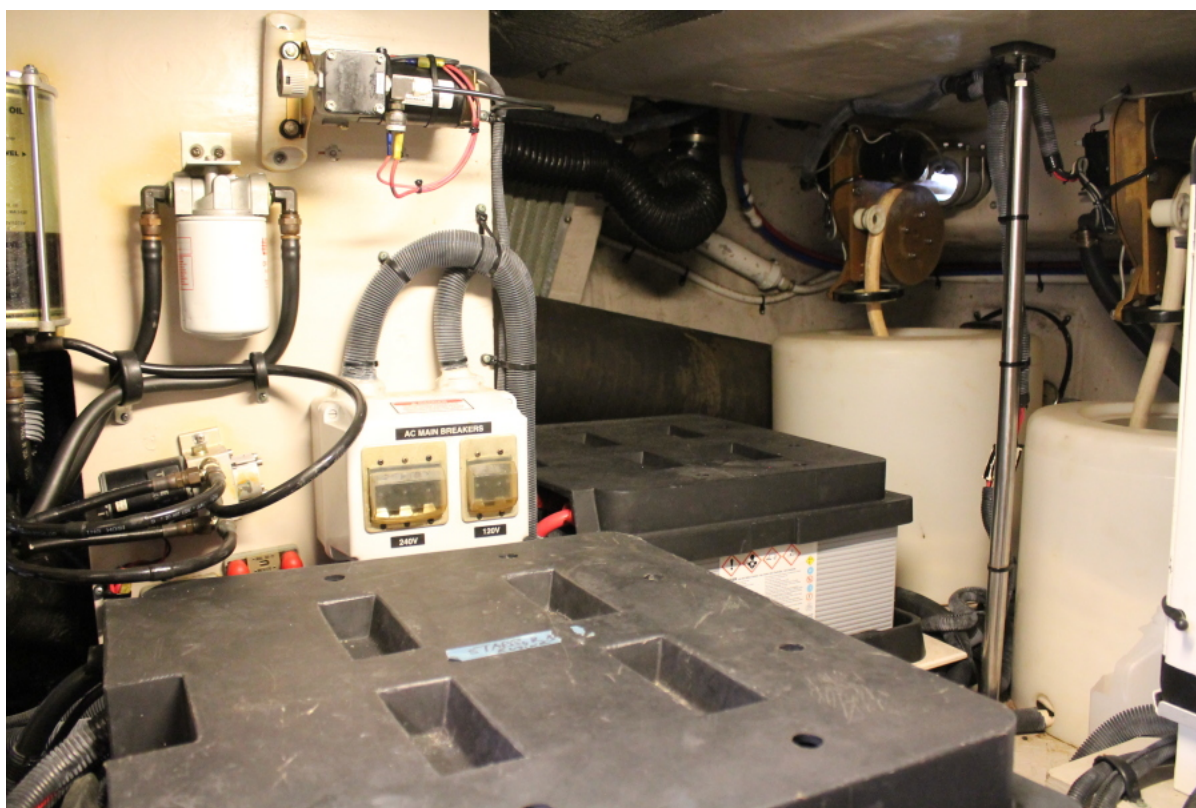


15KW Westerbeke & Soundshield



ProMariner Battery Charger









Engine Room



Port Side Dual Racor Fuel Filters





Starboard Side Dual Racor Fuel Filters



Profile



Profile





Profile



Profile





Profile



55 Profile