



# Observer

60' (18.29m) 1966 Custom Blount Marine Research Vessel  
Port Angeles Washington United States



## OVERVIEW

**\$199,000**

Manufacturer:	<i>Custom</i>		
Engines:	1 Detroit Diesel	Hull Material:	Steel
Engine Model:	8V-71	Cruise Speed:	9.5 Knots
Engine HP:	385	Max Speed:	12 Knots
Beam:	18' 7"	Cabins/Heads:	3 / 2
Max Draft:	9' 4"	Fuel Type:	Diesel
Water:	310 G (1173.48 L)	Fuel:	1200 G (4542.49 L)





## Data Sheet

Category: Cruisers  
Subcategory: Antique and Classics  
Condition: Used  
Model Year: 1966  
Beam: 18'7" (5.66m)  
Max Draft: 9' 4" (2.84m)  
LOA: 60' (18.29m)  
Cabins: 3  
Heads: 2

Maximum Speed: 12 Knots  
Cruise Speed: 9.5 Knots  
Fuel Type: Diesel  
Hull Material: Steel  
Hull Shape: Displacement

Displacement: 140000 lbs  
Fuel Tank: 1200 gal (4542.49 liters)  
Fresh Water: 310 gal (1173.48 liters)  
Holding Tank: 145 gal (548.88 liters)  
Builder: Blount Marine  
HIN/IMO: MB-121

## Engines/Generators

### Engine 1

Detroit Diesel  
8V-71  
Inboard  
385HP  
Fuel: Diesel  
Hours: 2800  
Year: 1966  
Location: Middle

### Generator 1

Westerbeke  
15  
Hours: 1264

### Generator 2

Westerbeke  
15  
Hours: 1274



## Summary/Description

MAJOR PRICE REDUCTION--Excellent Opportunity for a Long Range Cruising Yacht!

### 1966 BLOUNT MARINE RESEARCH VESSEL

**MAJOR PRICE REDUCTION NOW ONLY \$199,000!!**

**BRING OFFERS!!**

### EXCELLENT OPPORTUNITY FOR LONG RANGE CRUISING YACHT!

"OBSERVER" is a fully found go anywhere vessel. She was built of steel as a research vessel in 1966 by Blount Marine. Recently she was reconfigured to be a personal yacht capable of taking her owners anywhere in the world in safety. Her interior has been designed and crafted by a very knowledgeable yachtsman. She has 5 independent Air/Heating systems allowing to be at home both in the tropics or the icy waters of Alaska. With her strong and sound hull, economical Detroit Diesel, (2) 25kw generators as well as 1,200 gallons of fuel, freezer and watermaker allow her to be independent for weeks if not months. Easily handled by a couple but can accommodate up to 12 guests. She is must see, one of a kind vessel that's ready for new adventures.

## Vessel Walkthrough

Access into the vessel is from the aft deck through a short passageway. Directly to port is access to the upper level pilothouse which includes all the navigation, steering and engine/generator controls. There is seating for 6+ and full 360 degree visibility.

Back down from pilothouse you continue forward to the main salon and galley as well a separate day head. Wrap around heavy glazed windows provide lots of visibility even when sitting at the large L-Shaped settee. The galley is set up with an electric 3-burner infrared cook-top and a microwave with vent unit overhead. A full stand-up refrigerator/freezer is centerline and convenient to galley. There is a separate 23 cubic foot freezer located on the lower level. There is an entertainment system in the salon which includes an LCD TV with Sat TV and a Bose Sound system.

A staircase leads down to the lower level. At the bottom of the staircase is a large open area which includes a freezer, washer/dryer, a dehumidifier and a large amount of storage lockers.

Heading aft and under the upper salon you enter a passageway leading to 3 identical staterooms. Each cabin includes a lower double bunk and a single upper bunk. A full sized head services all the staterooms. Further aft is a watertight door that leads the workshop which has over 10' of workbench space. Here you will find the 40 gallon hot water heater and welding equipment. There is direct access to this area through an overhead hatch. Further aft there is another watertight door leading to the large engine room. There is full standing headroom as well the ability to walk completely around the engine and access all the ships system including the two (2) 25kw generators, watermaker, air compressor and various electrical systems.

## Main Salon

- Main Salon above Lower Stateroom Level
- Direct Access from Aft Deck
- Access to Lower Deck Level
- Large L-Shaped Settee Seating for 6+
- Port Side Linear Galley
- 110v/208 Appliances
- Day Head Behind Galley
- Entertainment Area including SAT TV
- Bose Sound System
- Large Windows for Excellent Visibility
- Direct Access to Pilothouse

## Galley

- Kitchenaid 3-Burner Infared Cooktop (New July 2019)
- Kitchenaid Overhead Microwave with Vent
- Fridgidaire Full Size Refrigerator and Freezer
- Stainlees Double Sink
- Pressure Fresh Water
- Maytag 23 Cubic Foot Top Loading Freezer
- Hot Water Tank 40 gallon
- Under Counter Storage

## Master Stateroom

3 Equal Staterooms on Lower Level, Each Stateroom Includes:

- 1 Lower Double and 1 Upper Single
- Numerous Storage Lockers
- Separate Full Head Services All Staterooms
- There is a Laundry Facility with Full Size LG Washer/Dryer
- Extensive Storage Areas Throughout Lower Area

## Deck

- Full Walkaround Deck
- Large Aft Deck for Zodiac Tender with 20hp Yamaha
- Lifting Crane
- Downrigger on Portside
- Full Bullwarks all Around
- Electric Windlass
- Fisherman Anchor
- Large Ocean Rated Windows
- Pilothouse with 360 Visibility with Seating for 6
- Bimini Over Aft Deck

## Electronics and Helm

- Furuno Navnet MFD8 with Sonar
- Furuno 48M Open Array Radar
- Intellisat Satellite Direct TV
- Furuno Navpilot 711-C
- Icom MC-424 VHF
- Furuno GP-32 GPS
- Ritchie Compass
- Morse Engine Control
- Rudder Angle Indicator
- Dometic AC Unit Overhead
- Helmseat
- 360 Degree Visibility

## Electrical

- 110v/208v 50 AMP Service
- Isolation Transformer
- Several Electrical Panels Throughout Vessel
- (5) MarineAire Air Conditioning/Heating Units
- Separate Controls for Each Unit
- (2) Raritan Electric Fresh Water Marine Heads
- (4) 8D Deep Cycle House Batteries
- (1) 4D Deep Cycle Main Engine Start Battery

- (1) Group 31 Gen Set #1 Start Battery
- (1) Group 31 Gen Set #2 Start Battery

## Engine Details and Mechanical Equipment

- Walkaround Full Headroom Engine Room
- Detroit Diesel 8V71 Main Engine
- (2) Westerbeke 25Kw Generators
- Arc Welder
- Welding Setup including Tanks
- Dewalt Air Compressor D55168
- Pro Safe FS60 Galvanic Isolator
- JABSCO Washdown Pump ParMax 52700
- RACOR 1000 Main Engine
- RACOR 900 Generator (x2)
- RO Watermaker
- LG Full Size Washer
- LG Full Size Dryer
- Full Separate Workshop

## Mechanical Disclaimer

Engine hours are as of the date of the original listing and are a representation of what the listing broker is told by the owner and/or actual reading of the engine hour meters. The broker cannot guarantee the true hours. It is the responsibility of the purchaser and/or his agent to verify engine hours, warranties implied or otherwise and major overhauls as well as all other representations noted on the listing brochure.

## Disclaimer

The company offers the details of this vessel in good faith but cannot guarantee or warrant the accuracy of this information nor warrant the condition of the vessel. A buyer should instruct his agents, or his surveyors, to investigate such details as the buyer desires validated. This vessel is offered subject to prior sale, price change or withdrawal without notice.





Profile



Entry



Bridge



Bridge Seating





Main Salon



Salon And Galley



Galley



Freezer And Storage Lockers



Access To Lower Deck





Cabin 1



Cabin 2 And 3





Main Head



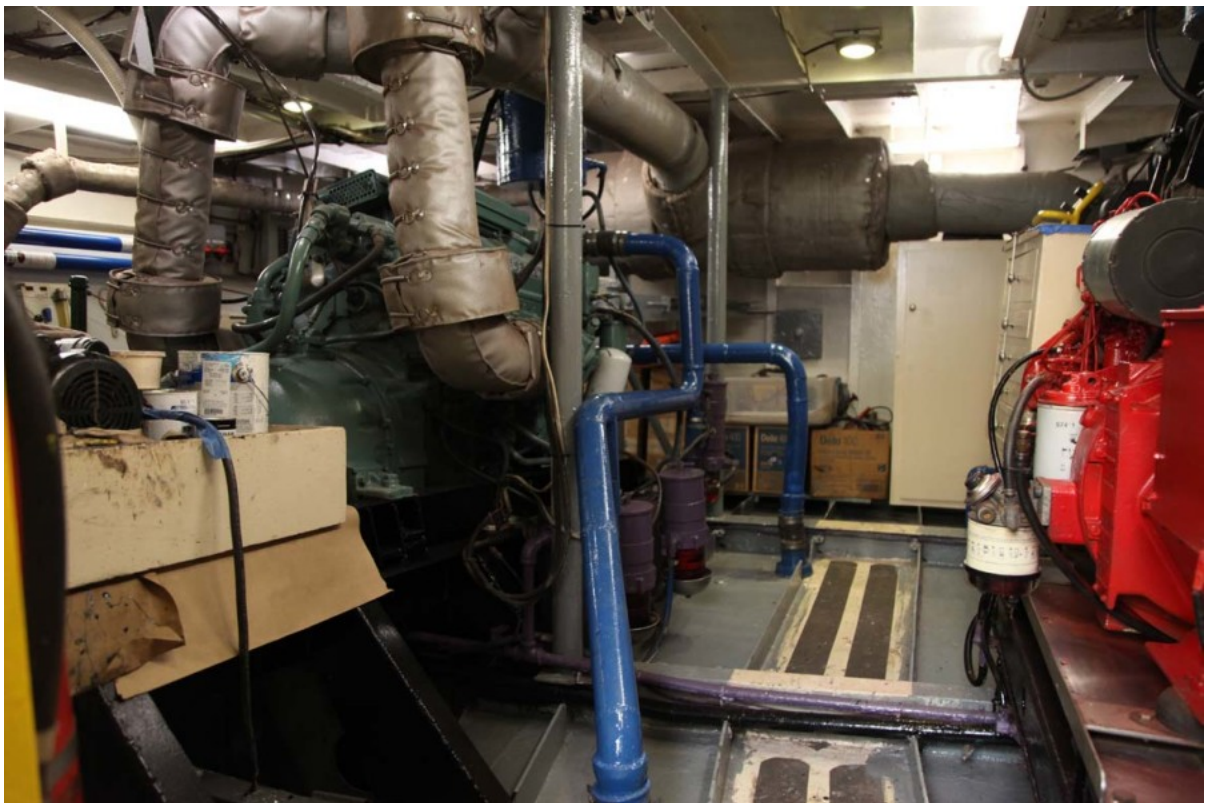
Washer And Dryer



Watertight Doors



Workbench

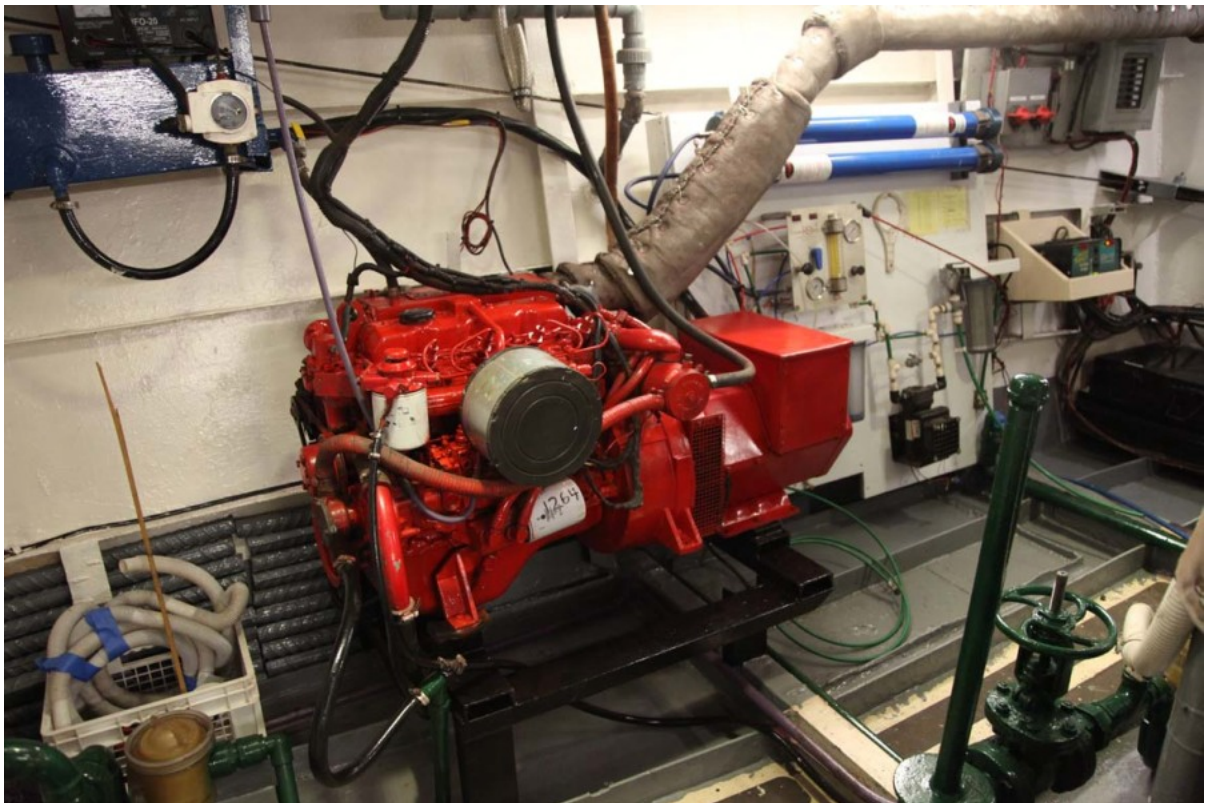


Engine Room





Engine



Genset

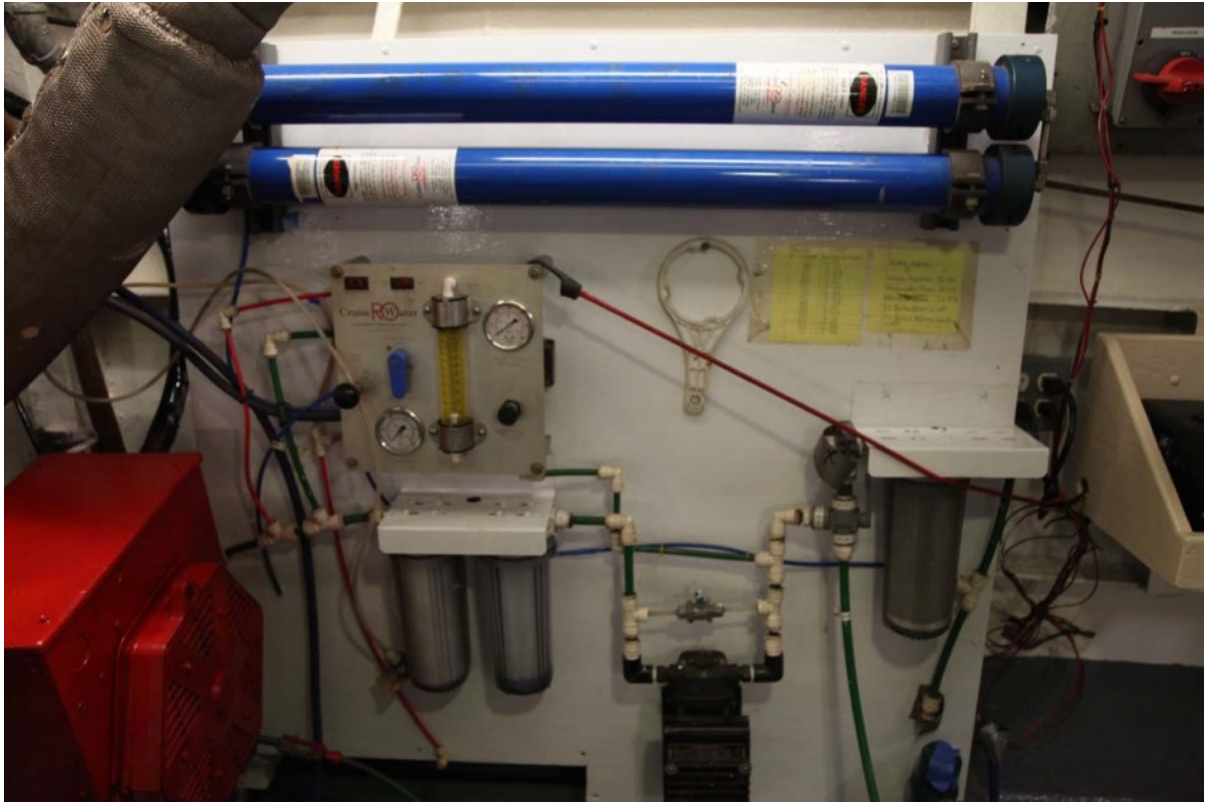




Genset



ARC Welder And Hot Water Heater



Watermaker



Air Compressor





Foredeck





Starboard Side Deck



Port Side Deck



Radar



Aft Deck Access



Aft Deck



Tender





Port Bow View



Starboard View