



45' (13.72m) 2024 Hatteras 45 Express no Tower  
Cape May New Jersey United States



## OVERVIEW

Manufacturer:	Hatteras		
Engines:	2 Caterpillar	Hull Material:	Fiberglass
Engine Model:	C-18A	Cruise Speed:	Knots
Engine HP:	1135	Max Speed:	Knots
Beam:	16' 6"	Cabins/Heads:	2 / 1
Max Draft:	4' 0"	Fuel Type:	Diesel
Water:	100 G (378.54 L)	Fuel:	800 G (3028.33 L)

## Call for Price





## Data Sheet

Category: Sport Fishing  
Subcategory: Express Cruiser  
Condition: New  
Model Year: 2024  
Beam: 16'6" (5.03m)  
Max Draft: 4' (1.22m)  
LOA: 44' 7" (13.59m)  
Cabins: 2  
Heads: 1

Knots  
Knots  
Fuel Type: Diesel  
Hull Material: Fiberglass

Displacement: 49700 lbs  
Fuel Tank: 800 gal (3028.33 liters)  
Fresh Water: 100 gal (378.54 liters)  
Holding Tank: 43 gal (162.77 liters)

## Engines/Generators

### Engine 1

Caterpillar  
C-18A  
Inboard  
1135HP  
Fuel: Diesel  
Location: Port

### Engine 2

Caterpillar  
C-18A  
Inboard  
1135HP  
Fuel: Diesel  
Location: Starboard



## Summary/Description

For Sale!

**45' Hatteras Express (no tower) Under New Construction!**

## Hatteras Specifications

- Length Overall (B) 44' 7" 13.59 meters
- Length Overall 47' 7" 14.50 meters with Bow Pulpit (B)
- Beam 16' 6" 5.03 meters
- Draft (with props) (C) 4' 0" 1.22 meters
- Freshwater Capacity (C) 100 gallons 378.5 liters
- Diesel Generator 14.7 BHP 17 kw
- Twin CAT C-18A Diesel Engines 1,135 MHP
- Fuel Capacity (C) 800 gallons 3,028 liters
- Holding Capacity (C) 43 gallons 162.7 liters
- Displacement Base Engine, 49,700 pounds 22,543 kilos
- Standard fuel
- Waterline Length 39' 0" 11.88 meters
- Height Above Waterline to:
- Top of Hardtop 10' 2" 3.09 meters

## The All New 45 Express Series

When you combine innovation with the best possible design, you create something iconic. The new Hatteras 45 Express Series features versatility, cutting-edge technology and legendary Hatteras performance, carried out with meticulous craftsmanship.

Two distinct configurations, style options and features make this series extremely versatile for the expert angler and inspired traveler alike. Choose from the Sportfish version with a full tower, outriggers and an arsenal of fishing amenities, or choose the Cruiser version with a low-profile exterior, spacious cockpit, swim platform and bow pulpit, and a luxury yacht finish.

With the 45 Express Series, Hatteras has turned a dream into reality. But not just any dream. Your dream.

## Crowd Pleaser

Creature comforts include a home theater system with 32-inch TV, dinette seating with functional storage underneath, and warm accents and furnishings. The galley offers quartz countertops, a ceramic cooktop, finished wood cabinets and under-counter lighting.

Your guests will appreciate the open and bright feel of the main cabin and galley.

## Dream On

After a day of play, relax and unwind in the forward stateroom. Think of it as your after-hours oasis, featuring a stereo, 20-inch TV and DVD player.

Private access to a head compartment with quartz countertop and backsplash, and expertly finished wood cabinets.

## Angler's Paradise

No one does fishing better than Hatteras. The 45EX Sportfish boasts Palm Beach style single-level controls, two in-deck fish boxes, a bait tank, rod holders and a mounting plate for a fighting chair.

Take your catch from sea to table in minutes using an electric grill built into the starboard bait and tackle center.

## Tailored For Comfort

Our optional interior arrangement provides additional overnighting space in a portside guest bunkroom without compromising living space or luxury in the cabin. Meanwhile, the U-shaped galley configuration offers cooks the working room, storage and quality amenities needed for meals prepared using the two-burner stove and microwave/convection oven.

## A Custom Touch

Optional portside bunkroom features over-under berths as well as additional storage and an overhead hatch to provide natural light. Owner comfort is paramount in the forward master stateroom with private head access. Choose from a selection of interior fabric, finish and accent packages to suit your preferences.

## Forward Stateroom

- Fabric headliner on track system for service access
- Custom fabricated innerspring mattress system
- Custom fitted sheet and mattress pad set
- Private head access
- 20" class LED TV
- Stereo with DVD player
- AC Duplex outlet(s) with ground fault protection
- Additional rod storage in berth
- DC LED lighting
- HVAC control
- Smoke detector

## Head Compartment

- Synthetic wood-style flooring
- Fabric headliner on track system for service access
- Wall coverings
- Quartz counter tops, back splash, with under mount sink
- Storage cabinet with mirror above sink

- Base cabinet to match interior finish with storage
- Mirrored doors
- Freshwater toilet
- Towel bar, towel ring, tissue holder, robe hook
- AC recirculating fan
- AC duplex outlet(s) with ground fault protection
- DC LED Lighting
- Holding tank monitoring system
- HVAC control
- Smoke and carbon monoxide detectors

## Galley

- Synthetic wood-style flooring
- Fabric headliner installed on track system for service access
- Dinette seating with storage underneath and wood table with stainless-steel pedestal
- AC under counter refrigerator and freezer drawer units (1 refrigerator, 1 freezer)
- AC 2 burner ceramic cook top
- Microwave/convection oven with stainless steel finish
- AC duplex outlet(s) with ground fault protection
- DC LED under-counter lighting
- DC LED dimmable lighting overhead

## Main Cabin

- Synthetic wood-style flooring
- Fabric headliner on track system for service access
- DC LED dimmable lighting
- Skylight (1)
- Access hatch to below deck equipment
- Foredeck hatch, with retractable shade
- Fabric and coverings, fine selection throughout
- LED 32" class TV
- Stereo home theater system with Blu-ray, blue tooth, USB port, Wi-Fi and FM tuner
- HVAC control
- Smoke and carbon monoxide detectors

## Exterior Finish/Construction

- Isophthalic gel coat, all areas
- Blister resistant vinylester gel coat, white (hull)
- Painted hull and superstructure for improved cosmetic and increased durability
- Painted boot stripe, black, linear polyester polyurethane coating
- Decks, non-skid surfaces, polyurethane beads
- Polymer/copper based anti-fouling bottom paint
- Solid fiberglass bottom with premium vinylester resins
- Hull sides of resin-infused composite construction with closed cell foam core and premium vinylester resins
- Solid fiberglass longitudinal stringers
- Steel installed in longitudinal stringers at key locations to create engine foundations
- Bulkheads, athwartship and interior decks of resin infused composite construction using closed cell foam core
- Integrated hardtop

## Hardware and Miscellaneous

- Wood interior bulkheads, cabinetry in rift cut white oak, flush filled satin finish
- All interior hardware in polished chrome
- Anchor 6' galvanized chain, 250' anchor line
- Four polished stainless-steel spring line cleats through bolted-in aluminum backing plate
- Two polished stainless-steel bow cleats and chokes, stern cleats and hawse pipes, through bolted-in aluminum backing plate
- Polished anodized aluminum rails on bow
- Deck plates for fuel and water fills and waste pump out
- Bronze rudders
- Dual air horn
- Fog Bell
- Transom zinc
- Heavy duty couplings
- Rudder bearings and bronze struts with dripless seals
- Alloy 22 high-strength propeller shafts
- Dripless propeller shaft seals with spare seals
- Propellers, Nibral high performance
- Stainless-steel trim tabs
- Windlass
- Underwater lights
- Life jackets (6)
- Cushion
- Portable "drychem" fire extinguishers (4), U.L. approved type in compliance with United States Coast Guard and ABYC Standards
- Braided nylon mooring lines (4)
- Fenders (4)

## Engine Compartment

- Painted polyurethane engine room and bilges
- Powder coated grab rails
- Rubber deck mat between engines
- Insulation in engine room ceiling, for noise mitigation in main cabin
- AC fluorescent lights
- DC Lights
- DC bilge blowers
- 17kw freshwater cooled diesel generator
- Twin diesel, freshwater-cooled main engines with electrically controlled marine gears, neutral interlocks, and exhaust silencers
- Fiberglass fuel tank constructed with fire retardant resin fittings
- United States Coast Guard type A1 U.L. Marine listed fuel lines
- Electrical fuel priming pumps, main engines
- U.L. Marine listed duplex fuel filters/water separators, engines and generators
- Water tank (100 gallons)
- Pressurized 24V DC freshwater pump
- One 230VAC 11-gallon electric water heater
- Sealed shower sump pump
- Bronze/chrome-plated ball valves through bolted-in solid fiberglass on all underwater through hull fittings with

electrical bonding throughout

- Individual sea chests for each engine, and gensets
- Fiberglass rudder shelf bolted to steel plates in the stringers
- Stainless-steel steering tie-bar with pivoting self aligning ball joining connection at all cylinder and tie bar connections
- Shore water connection with pressure-reducing valve
- 24-volt DC bilge and sump pumps with heavy-duty float switches and protective guards
- FM200 fixed fire-extinguishing system for engine compartment with automatic and remote manual discharge and audible and visual discharge signals
- DC voltmeter in DC distribution panel
- Oil change systems

## Electrical Systems

- Two 24 volt bank of heavy-duty, 12 volt marine batteries (4 AGM) mounted in a fire retardant fiberglass box
- Bow Thrusters, 8HP
- Battery paralleling system with switch at helm
- Automatic, 240 volt battery charger, 50/60Hz
- Battery control panel with fuses and magnetic circuit breakers
- AC and DC distribution panels with magnetic circuit breakers
- AC switching panel with source selector
- One 240 volt, 50 amp, retractable shoreline with ELCI ground fault protection, overcurrent protection, and fail-safe galvanic isolator
- AC duplex outlet(s) with ground fault protection
- DC LED lights and fixtures
- Air Conditioning, 18,000 BTU's with reverse cycle heating
- TV antenna, Omni-directional

## Cockpit

- Molded fiberglass mezzanine with seating
- Seating with cushions across upper mezzanine
- Aluminum mounting plate installed for mounting fighting chair
- Bait and tackle center with storage, gas spring, full-length stainless steel piano hinges and latch
- Bait tank molded into transom, 56 gallons
- Tricolor courtesy lighting under gunwales
- Mezzanine with integrated storage
- Freezer under mezzanine seating
- Electric grill built into starboard bait and tackle center
- Fish boxes (2), large capacity, insulated, flush in deck with macerator
- Hose and pistol-grip nozzle and freshwater wash down outlet
- Hot and cold hand held shower
- Shore water connections with pressure-reducing valve
- Saltwater wash down
- Insulated drink storage box
- Icebox, fitted with gasketed lid, gas spring actuator, full length stainless steel piano hinges
- Hatched, lazarette and fish boxes, heavy-duty, gasketed, draining, gutters, full-length stainless steel piano hinge and latch
- Scrubbers, in cockpit and cockpit hatch drains
- Transom door with top gate, heavy duty polished stainless steel hardware
- Stereo speakers (4)



- Bridge deck refrigerator
- Electric grill
- Helm deck refrigerator

## Helm Console

- Helm wheel, stainless steel
- Control station with all necessary switches
- Pod console with steering wheel
- Hydraulic power-assisted steering
- One helm chair, one companion
- Fire and bilge high water level alarms, audible
- Engine instrumental panel, custom with audible warning system and hour meters
- Palm Beach single lever electronic controls
- Switch panels, custom, stainless steel
- USB port, 110V outlet
- Helm console charger storage

## Engine Options

- Twin CAT C-18A Diesel Engines
- 1,015 MHP 756.8 kw
- Twin CAT C-18A Diesel Engines
- 1,150 MHP 857.5 kw

## Footnotes

Right is reserved to make changes at any time, without notice, in prices, material, specifications and equipment. Orders are accepted subject to prices prevailing at time of shipment.

Orders requesting any material and/or equipment which differ from that selected by Hatteras as standard or optional for this model will be considered a custom change and will require additional charges. Prices shown for many options may apply only if ordered prior to start of production. Once production begins, orders for such options may require additional charges due to non-standard installation requirements and/or lead times. In order to show equipment size and location, line drawing may include some optional items.

Specifications, standard equipment and optional equipment effective with boats sold at January 1, 2017 until December 31, 2017.

One set of sheets includes: one bottom sheet, one top sheet, pillowcase(s).

Hatteras Base Prices

Length overall does not include the optional swim platform or bow pulpit.





Generator is not intended to supply power for all standard and optional accessories simultaneously. Load must be limited to generator output rating.

Option must be ordered prior to start of production. Price shown reflects cost of scheduled installation requirements. A late request for this option will require an additional charge.

Weight, draft, and freeboard are based on an estimate of model's displacement with largest engines available and all tanks filled. Heights are estimated with largest engines and all tanks empty. Actual figures will vary depending on production tolerances, equipment, supplies and stores on board, as well as operational and sea conditions.

Capacities of tanks are estimated to be total capacity of all tanks normally furnished in this model. Usable capacities will vary depending upon conditions.

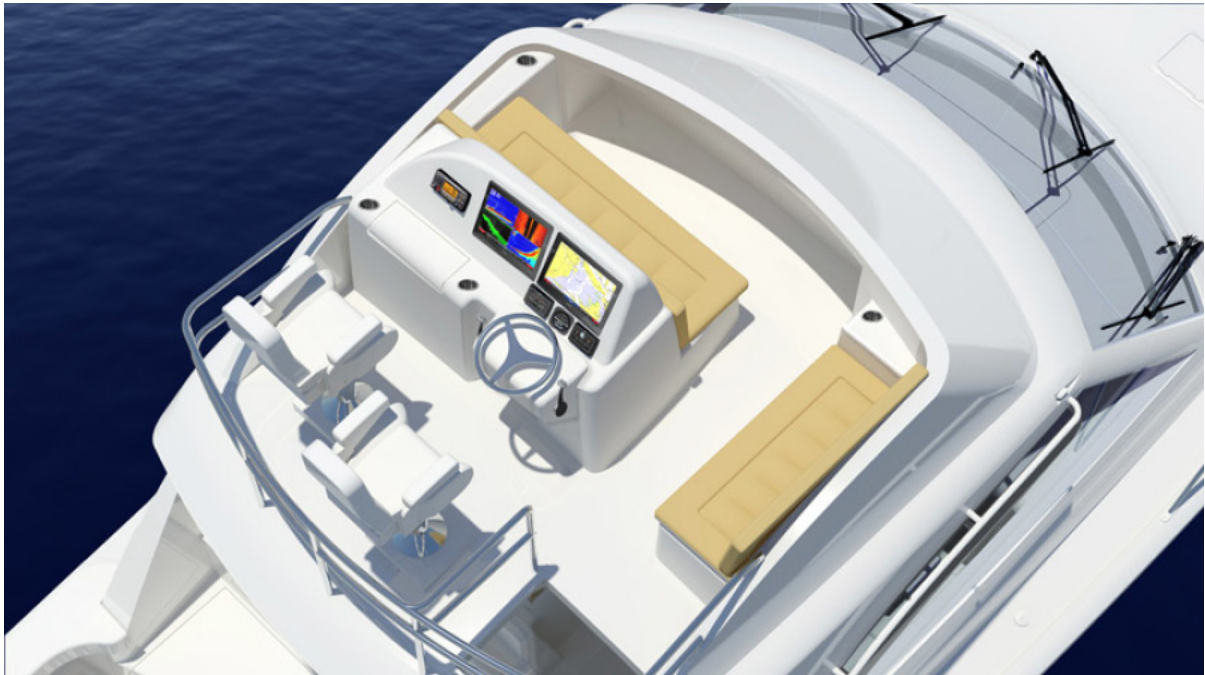
## **Mechanical Disclaimer**

\*Engine hours are as of the date of the original listing and are a representation of what the listing broker is told by the owner and/or actual reading of the engine hour meters. The broker cannot guarantee the true hours. It is the responsibility of the purchaser and/or his agent to verify engine hours, warranties implied or otherwise and major overhauls as well as all other representations noted on the listing brochure.

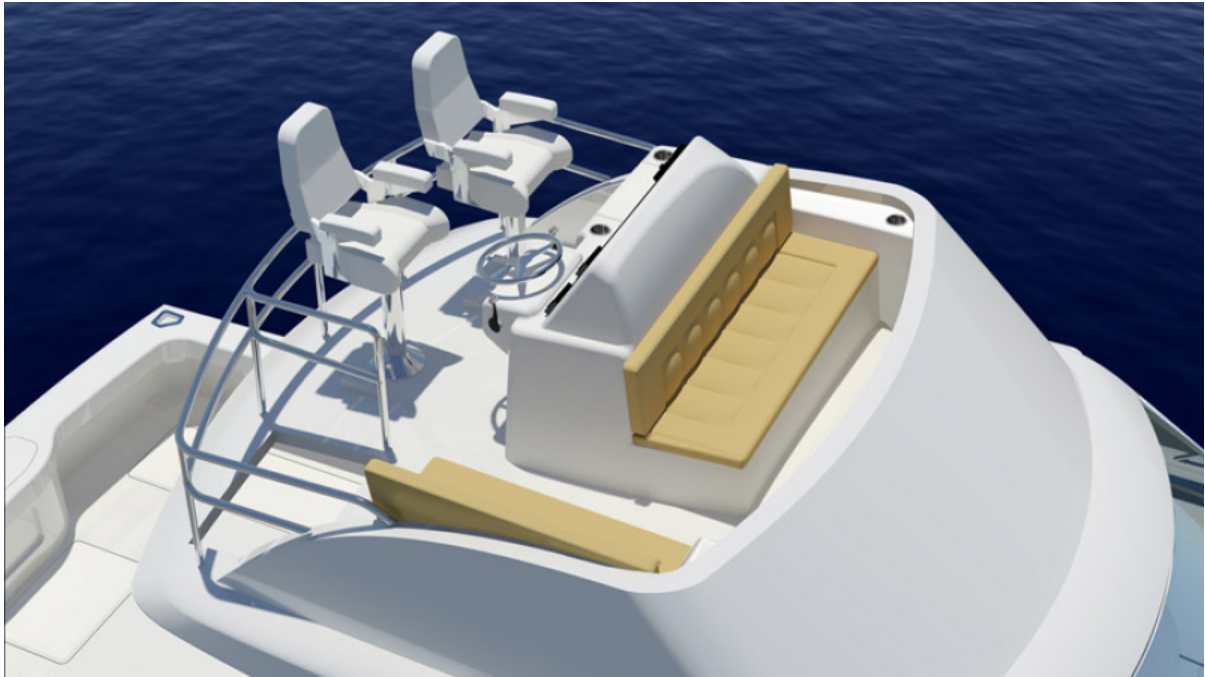




Profile Rendering



Manu. Rendering



Manu. Rendering



Salon and Galley



Cabin Entry





Dinette



Galley





Galley



Galley



Forward Berth



Forward Berth





Bunks



Head



Cockpit





Helm



Helm



Engine Room