



90' (27.00m) 2026 Custom Tri Deck Explorer Yacht
Unknown Brazil



OVERVIEW

Manufacturer:	Custom		
Engines:	2 Caterpillar	Hull Material:	Steel
Engine Model:	c18 A rated 450 BHP	Cruise Speed:	Knots
Engine HP:	0	Max Speed:	Knots
Beam:	24' 2"	Cabins/Heads:	/
Max Draft:	8' 0"	Fuel Type:	Diesel
Water:	3000 G (L)	Fuel:	

\$9,500,000





Data Sheet

Category: Other	Knots	Fresh Water: 3000 gal	Builder: All Ocean
Condition: New	Knots	Yachts	
Model Year: 2026	Fuel Type: Diesel	Designer: Luiz deBasto	
Beam: 24'2" (7.37m)	Hull Material: Steel		
Max Draft: 8' (2.44m)			
LOA: 90' (27.43m)			

Engines/Generators

Engine 1

Caterpillar
c18 A rated 450 BHP
Fuel: Diesel

Engine 2

Caterpillar
c18 A rated 450 BHP
Fuel: Diesel



Summary/Description

For Sale

The tremendous response we have had from the yachting public, owners and professionals has led us to the conclusion that we needed a standard layout and then several optional layouts to meet all of the requirements we received information on.

The lower deck layout stays the same in all of the arrangements, though there are options for Pullman berths and sliding single bunks to form doubles. The standard main deck layout has the master cabin on the main deck and enclosed galley. The next arrangement is exactly the same but with the option to have a sliding panel between the galley and the dining area to make an open galley format. There is a change in the one of the refrigerators, the oven layouts and china cabinet to create a fully open format.

Both of these layouts can also be done with the "Captains cabin" up option, which would give you the option to carry up to 6 crew or have a dedicated cabin for fishing guides, scuba guides or other extra personal. You still maintain a comfortable skylounge with this option with the convertible settee and full head and shower to give you the 5th stateroom.

The other layout options are created if you take the "master Cabin Up" option which puts the master behind the wheelhouse. The impressive thing about this layout is that you have almost all of the features you find in the main deck cabin, the same amount of storage and hanging locker space. An option to have a tub/shower combination and private toilet room.

The master up then gives you several other options for the Main Deck.

You can have a large TV/Lounge with a fold out queen settee and full head maintaining your 5th guest option. This then would allow you to create a bar/game room where the Aft Saloon is or keep the Saloon and have two lounging areas. You also have a large office area.

Another option is to have a full country kitchen with extra large additional pantry, informal dining/breakfast table. You still maintain the separate formal dining area; again you have a good office space.

Engines

Max Speed: 10 knot (12 mph)

Tanks

Fuel: 9,800

Holding: 854 gall

Accommodations

The tremendous response we have had from the yachting public, owner's and professionals has led us to the conclusion that we needed a standard layout and then several optional layouts to meet all of the requirements we received information on.

The lower deck layout stays the same in all of the arrangements, though there are options for Pullman berths and sliding single bunks to form doubles. The standard main deck layout has the master cabin on the main deck and enclosed galley. The next arrangement is exactly the same but with the option to have a sliding panel between the galley and the dinning area to make an open galley format. There is a change in the one of the refrigerators, the oven layouts and china cabinet to create a fully open format.

Both of these layouts can also be done with the "Captains cabin" up option, which would give you the option to carry up to 6 crew or have a dedicated cabin for fishing guides, scuba guides or other extra personal. You still maintain a comfortable skylounge with this option with the convertible settee and full head and shower to give you the 5th stateroom.

The other layout options are created if you take the "master Cabin Up" option which puts the master behind the wheelhouse. The impressive thing about this layout is that you have almost all of the features you find in the main deck cabin, the same amount of storage and hanging locker space. An option to have a tub/shower combination and private toilet room.

The master up then gives you several other options for the Main Deck.

You can have a large TV / Lounge with a fold out queen settee and full head maintaining your 5th guest option. This then would allow you to create a bar/game room where the Aft Saloon is or keep the Saloon and have two lounging areas. You also have a large office area.

Another option is to have a full country kitchen with extra large additional pantry, informal dinning/breakfast table. You still maintain the separate formal dinning area; again you have a good office space.

Accommodations Walkthrough

Starting on the Lower deck forward;

The crew's quarters are forward with Captains cabin to the port side with double bunk with draws under it, there is a full height hanging locker with draws below, side table with draws, storage shelves and TV. Forward of this is an ensuite

head with shower, toilet and sink. There is an option for a second bunk in this cabin.

To starboard is a crew cabin with upper and lower bunks, two hanging lockers and a chest of draws, there are also draws under the lower bunk. Forward is a head that is identical to the one in the captain's cabin. There are escape hatches located in both heads and TVs located in both cabins.

Going aft through the watertight door is a corridor and stairs up to the galley, to port is the door to the crew lounge which leads to the separate laundry room.

The crew lounge has a large settee with a table that fold down to form a large bunk. The idea behind this feature is on those occasions when you either need extra crew or when you have a fishing guide or diving guide onboard you can accommodate them in the crew's area. They can utilize the crew head during the day and the main deck head at night. The settee has storage under it.

The lounge has an under counter refrigerator, sink, microwave oven, and TV/Monitor.

Aft of the lounge, is the full size laundry with extensive storage. There are two full size LG washers and two full size LG ventless dryers. There is ample counter space for pressing machines and an ironing board. A hatch is located in the overhead size to allow removal of the washer and dryers.

There is a service door from the laundry to the guest areas, allowing the crew to clean up the area and attend to the cabins without interfering with the guests.

The lower guest accommodations consist of two double staterooms with two lower full size single bunks with ensuite heads and showers. There is the option to put Pullman berths in both of these staterooms and to have the inside bunk slide out board to form a queen bed against the wall. Each cabin has a large hanging locker with draws; draws are also located under each of the beds. There is additional storage built in under the stairs. Both staterooms have escape hatches.

Forward to starboard is a full walk around queen guest cabin with large hanging locker with draws. Draws are also located under the bed. There is an ensuite head with a shower. The bulkhead between the laundry/queen stateroom and the twin staterooms is water tight. There are two sets for doors for the queen and laundry, one is a standard door and the second is a watertight door that sits in a pocket.

The centerline stairs lead from the lower foyer aft up to the main deck foyer.

The main deck foyer separates the aft main saloon and the formal dinning area. There is a door to the side deck, dayhead and wet locker.

Forward on the main deck on the standard layout is the FULL BEAM MASTER STATEROOM. The master stateroom is lighted by two large windows bringing in abundant natural light which enhances the feeling of space created by the 24'2" beam.

On entering to starboard is a 7' L shaped settee with which is set against the windows creating the feeling that you are directly connected with the outside. The King size bed is located just off centerline on the portside with built in pop up TV at the foot of the bed. The position of the bed takes full advantage of the stunning view the port and starboard windows offer. There are draws located under the bed and a large desk positioned in front of the portside windows. Forward of the bed to port and starboard are matching walk in closets with hanging area and draws. The large head is located centerline with his and her sinks, over sized shower, separate toilet room with bidet. There is also a 3rd stacked washer dryer and linen closet.

The bulkhead between the master stateroom and the galley and dinning area is steel with sound insulation both for fire protection and privacy. There is an escape hatch from the master to the boat deck.

Aft of the master stateroom to Starboard is the separate dinning room for 8 to 10 guests. The dinning area has direct service from the large commercial style galley. The area has full advantage of the two large windows to create an open airy feel.

The very large professional galley is laid out to maximize efficiency in gourmet cooking and high end service. The Chef has her own working zone that includes large counter spaces, 6 burner cook top with vent, full size fridge, two ovens, standard dishwasher, double sink with disposal and microwave oven. The stewardess has her own zone, with full size fridge, double freezer, trash compactor, double sink with disposal and a 3 minute dishwasher. The galley has granite counter tops through out.

There is a large pantry in the stewardess area and a china cabinet/pantry located near the door to the galley and saloon. This cabinet holds the wine cooler and has dual doors allowing the china to be filled from the galley side and removed from the dinning saloon side. There is a door from the galley directly to the side deck.

The stairs from the crews quarters land in the galley and allow the crew to move from there to all of the exterior areas and the pilothouse without crossing into the guest areas. The steps to the pilothouse are positioned near the galley door

to the saloon. This allows the crew to go directly from the galley to the pilothouse with minimal intrusion into the guest area.

A great deal of work was done to insure that the crew can move about the boat during all types of operation without interfering with the guests and to make it very efficient for them to serve the guest and maintain the vessel.

These qualities also enhance the operational abilities of the vessel when she is being operated by the Owner with a limited crew or friends and family.

Aft of the main Foyer is the main saloon; there is a large L shape settee, comfortable chairs and a pop up TV. This area can easily accommodate 10 guests. The ample window space brings in light and creates a wonderful environment for socializing and relaxing.

Aft of the main saloon is one of three out door dining and relaxing areas. There is a table for 8 to 10 persons and wet bar with sink, refrigerator and trash bin. There are stairs leading down to the swim platform with access to the lazarette and engine room. There is also a door directly from the aft deck to the engine room and stairs leading up to the aft bridge deck. The two side walk ways lead forward to steps up to the pilothouse and boat deck. There are two cleats and a warping windless port and starboard on the aft corners of the deck. They are located on a raised shelf to ease working the lines. The raised position reduces the need to bend over when line handling and allows you to keep better visual contact with the dock and cleats enhancing safety and ease of operation. The cleats located on the lower main deck are also raised for the same reasons.

Forward on the pilothouse / boat deck;

All the way forward is the anchor handling well. This area was created for a number of reasons. It again puts the cleats and anchor handling gear in a raise position for ease of operation. Even though the windlasses and chain sit in a stainless steel tray with their own drains the well assures that any mess will be confined to the working area. The shape acts as a trap for any sea water that comes over the bow helping to protect the tenders and ensures that the hatch to the chain locker is well above deck level.

Next aft is the boat deck which amazingly for a 90' vessel can carry two x 22' (6.6m) tenders or one large tender and a smaller one plus other water craft.

Three steps up from the boat deck brings you to the Portuguese bridge with wing stations to port and starboard that are set out to increase visibility and ease of handling. You can enter the large pilothouse from port or starboard. The pilothouse and Portuguese bridge are raised above the level of the boat deck to assure good visibility over the tenders

and the boat. The large consol has ample space for all of the electronics and controls. There are two chart tables to port and starboard both of which are sized to accommodate a full size standard Admiralty chart. There is a large raised settee to port with granite top table. The settee is size so it can be utilized as a pilot berth when needed. To starboard aft is a large desk and radio area. The space under the raised pilothouse floor is utilized to hold the radio and navigation batteries and chargers, wire raceways, air ducts and other equipment freeing up space under the consol.

Aft and down two steps is the upper Foyer, to port is are the stairs leading from the dinning saloon, to starboard is a second day head with a shower. The foyer is separated from the wheelhouse and the skylounge by doors assuring that night operations can be properly maintained without in pinching on the guests.

The skylounge is HUGE; it is almost full beam, just allowing for proper service of the exterior windows. The large windows on three sides create panoramic views To port there is a full stand behind bar with bar stools, granite top, wine cooler, icemaker, refrigerator and sink. Aft of this is a settee and chairs, the settee folds out to a queen bed, combined with the full head, this creates the option to use this area as a 5th guest stateroom.

To starboard is an area for a gaming table and a built in desk. On the forward bulkhead between the door and bar is a space for a 47" TV.

Aft of the skylounge is the second out door lounging and dinning areas. There is a table for 8 to 10 people, set out on a balcony offering a stunning view. The settee has been sized so that it is comfortable for both dinning and lounging / sun bathing. There is ample space for lounge chairs. Forward to port is a large cabinet that holds additional chest freezers, one is designated as a food freezer and the other as a trash freezer. This is a point that is often missed on long distance cruising vessel. You can dispose of bio-degradable materials along the way but what do you do with other items that have been exposed to them. By using the trash compactor in the galley you can minimize the size of these materials and by freezing them you can keep them as long as necessary until you find a proper place to dispose of them. There is also space for storage of items needed for the deck.

Up the stairs from the aft pilothouse deck you will come to an extravagantly large flybridge that has all of the space and features found only on much larger vessels and the 3rd of the outdoor dinning and lounge zones. The Jacuzzi is aft and positioned to take advantage of the balcony, to next to it to port is an over sized raised sun pad which puts the people on the pad in a position to fully enjoy the views and communicate with people in the Jacuzzi. It also creates a huge storage area. To starboard is the BBQ with cabinet and good working counter space on either side. Forward of this is the full bar with refrigerator another ice maker, sink and storage. Across from the bar is the large dinning table which can easily comfortably accommodate 10 to 12 guests.

Next forward up two steps is a raised helm and seating area. The two settees to port and starboard are sized so they can also be used as day beds to relax in the shade and read or enjoy the enhanced viewing point. The centerline helm has space for all the controls and equipment and also enjoys an enhanced view. This area is fully covered by the hard top.

Optional layouts include the following:

Captain's cabin up option:

There is an option for a Captain's cabin up behind the wheelhouse. This cabin fits quite nicely into the space with minor rearranging of the wheelhouse and skylounge. In the wheelhouse we have split the large settee into a corner settee located on the starboard side and a raised seat behind the helm. We have moved the desk to the port side and increased its size.

The captain's cabin features a queen size bed, large hanging locker with draws in front and a full head and shower.

The only impact on the skylounge is you lose the stand behind bar. We replaced this with a full wet bar that has all of the equipment found in the stand behind bar. The fold out queen bunk still fits well.

Galley options with master on main deck:

The open galley option takes the wall between the dining saloon and the galley and changes it either into a permanent open area with a railing along the crew access stair or with a half height wall that hides a sliding panel. This is the preferred arrangement as it shuts the galley off when cleaning up or at other times when it may be better to control odors within the galley. The full height fridge and stacked ovens are rearranged to be a under counter fridge and under counter ovens. The china cabinet is stopped at counter height and there is a second cabinet above it which hides a fold down panel which fully closes off the galley.

Owner's cabin behind the wheelhouse option:

This option fits amazingly well into the skylounge space. There was no need to modify the wheelhouse layout. The largest difference is there is no walk in closets, however the total actual hanging locker and draw space is almost exactly the same. The king size bed is the same and there is a large raised settee to starboard. The master head has his and her sinks, a separate toilet room and either an extra large shower or a full size tub (Jacuzzi) / shower. The aft pilothouse deck now becomes a private deck for the owner. Depending on the layout chosen for the main deck, we have moved the two freezers down, which creates additional room for comfortable chairs or lounge chairs.

The owner cabin up layout creates the opportunity for 3 optional layouts for the main deck.

Main deck options with Master cabin up option:

Country kitchen option:

The country kitchen option creates 3 distinct dining options. You have the standard formal dining table to starboard of the galley, a large informal dining table that can easily all of the guests and all the crew and a breakfast bar. There is a full wet bar encompassing all the equipment that was located in the bar in the flybridge and a large desk / office area. In addition there is a VERY large pantry forward which now holds the two freezers from the pilothouse deck and the full size refrigerator. The trade off is the galley loses one oven, but the microwave is also a full size convection oven but we gain extra refrigeration space by adding an under counter fridge for the chef and still having the full size refrigerator in the pantry.

With this layout you lose the option of having a 5th stateroom using a fold out settee.

The main saloon is maintained as it is on the standard layout.

TV / Lounge forward option:

This option can be done with the standard close galley layout or the open galley layout.

What is created with this layout is a very large TV and reading lounge. The lounge contains a large U shaped settee that has a pull out queen bed, forward there is a full head with shower, large closet. A 62" TV can be mounted on the forward bulkhead. To starboard is a very large desk / office area and a raised settee set into the window to maximize the view. You can have a full wet bar to port or just a drinks refrigerator. Aft you can keep the standard saloon arrangement or create the 3rd option.

Bar / Game room in aft saloon:

The aft saloon can be changed to have a large sit down bar with service directly from the galley. The bar is fully equipped per the skylounge bar. There is room for a large game table and comfortable chairs.

Built to

Location: Shipyard

Model: Tri-deck Explorer yacht

Type: Explorer Yacht

Designer: Luiz deBasto

Staterooms: 4/5

Crews Quarters 2/3

Berths: 4/5

Captain's cabin: yes



Hull Mtrl: steel

Hull Config: Full displacement

Disp: 484000 (220000 kg)

Inter Designer: Luiz deBasto design

Exterior Designer: Luiz deBasto design

Top: Flybridge with hard top

Speed 9.5 / 10 knots

Hull Characteristics

Hull Marine grade Steel/Superstructure marine grade Aluminum

Lube oil tankage 120 gal (.51 metric tons)

Contaminated oil tankage 120 gal (.51 metric tons)

Black water tank 427 gal (2.5 metric tons)

Grey water tank 427 gal (2.47 metric tons)

Range @ 9.5 knots 4000 nm

Hull subdivision

The vessel's hull shall be subdivided by transverse and longitudinal watertight and or oil tight bulkheads as shown on the contract drawings and consist of the following compartments:

1. Forepeak
2. Fresh Water Tanks
3. Crews quarters
4. Guest Stateroom #3 and crew lounge and laundry Compartment
5. Guest stateroom #1 and # 2 Compartment
6. Fuel Oil Tanks
7. Engine Room
8. Steering Gear Compartment, lazarette

Hull Structure

KEEL 3/4" x 10" full length



STEM 3/4" x 10"

FLOORS 1/4" plate

SKEG (Depth 6") sides 5/16", cross section 5/16", bottom 1/2"

BOTTOM PLATING 5/16" plate, up to the chines

SIDE, TRANSOM PLATING 1/4"

MAIN DECK PLATING 1/4" plate

BULKHEAD PLATING 1/4" plate and 3/16" where corrugated

TANK TOP PLATING 1/4"

TRANSVERSE FRAMES Deck:3"x 3" x 5/16"/Side:3" x 3"x 5/16"

TRANSVERSE FRAMES Floors: 1/4" '

ENGINE FOUNDATION 8" x 3/4"

LONGITUDINAL FLOORS 5/16"

DECK GIRDERS 3"x 3" 5/16" beams

BOTTOM LONGITUDINALS 5/16" plate

SIDE LONGITUDINALS 3"x 3" x 5/16" or plate

DECK LONGITUDINALS 5"x 3"x 5/16"

BULWARK FRAMES 4"x 1/4" plate

BULWARK LONGITUDINALS 3"x 1/4"

BULWARK CAP PLATE 2 1/2" stainless steel oval

BULKHEAD STIFF-VERT Corrugated

BULKHEAD STIFF-HORIZ Corrugated

ANCHOR SPRIT AND GUARDS Stainless steel 316

CHAIN LOCKER 5/16"

RUB RAILS (9" x 3" x 9") x1/4" 316 Stainless steel cap



Photo 1 Photo 1



Cutway View Cutway View



Profile Profile

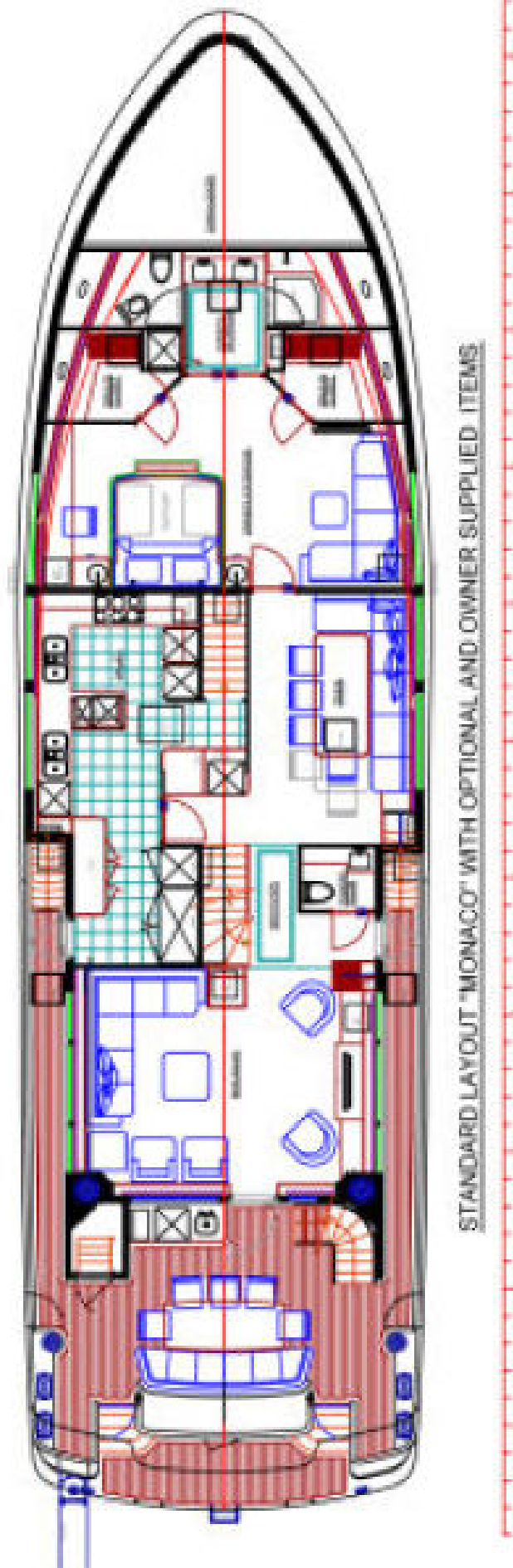


Photo 5 Photo 5

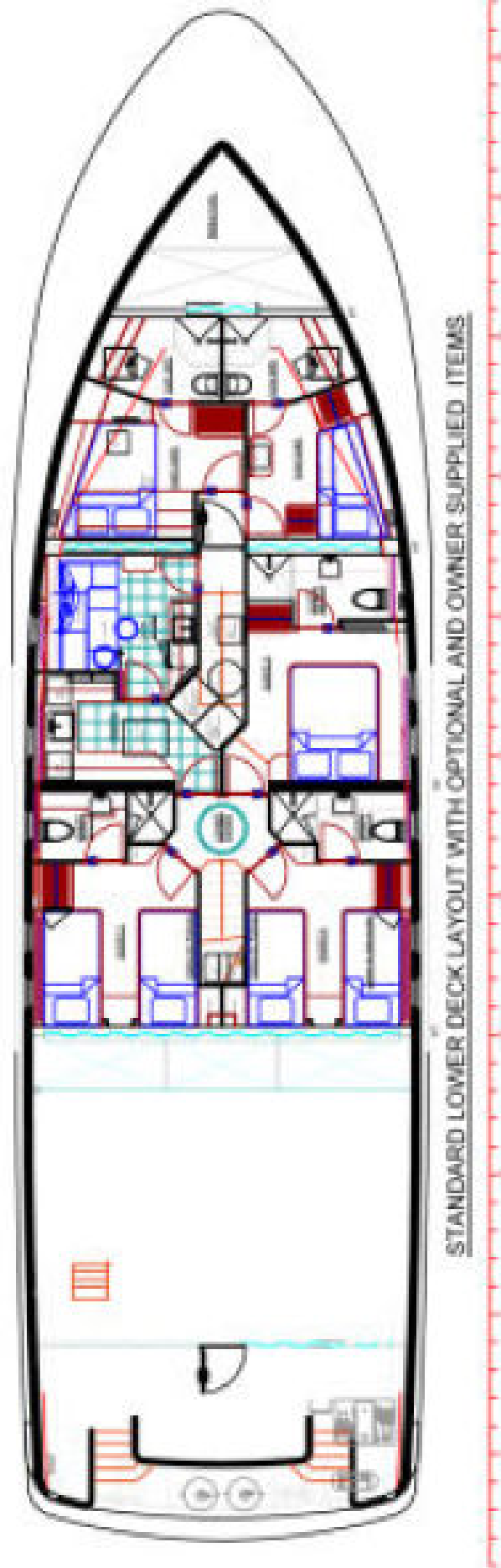


Photo 6 Photo 6

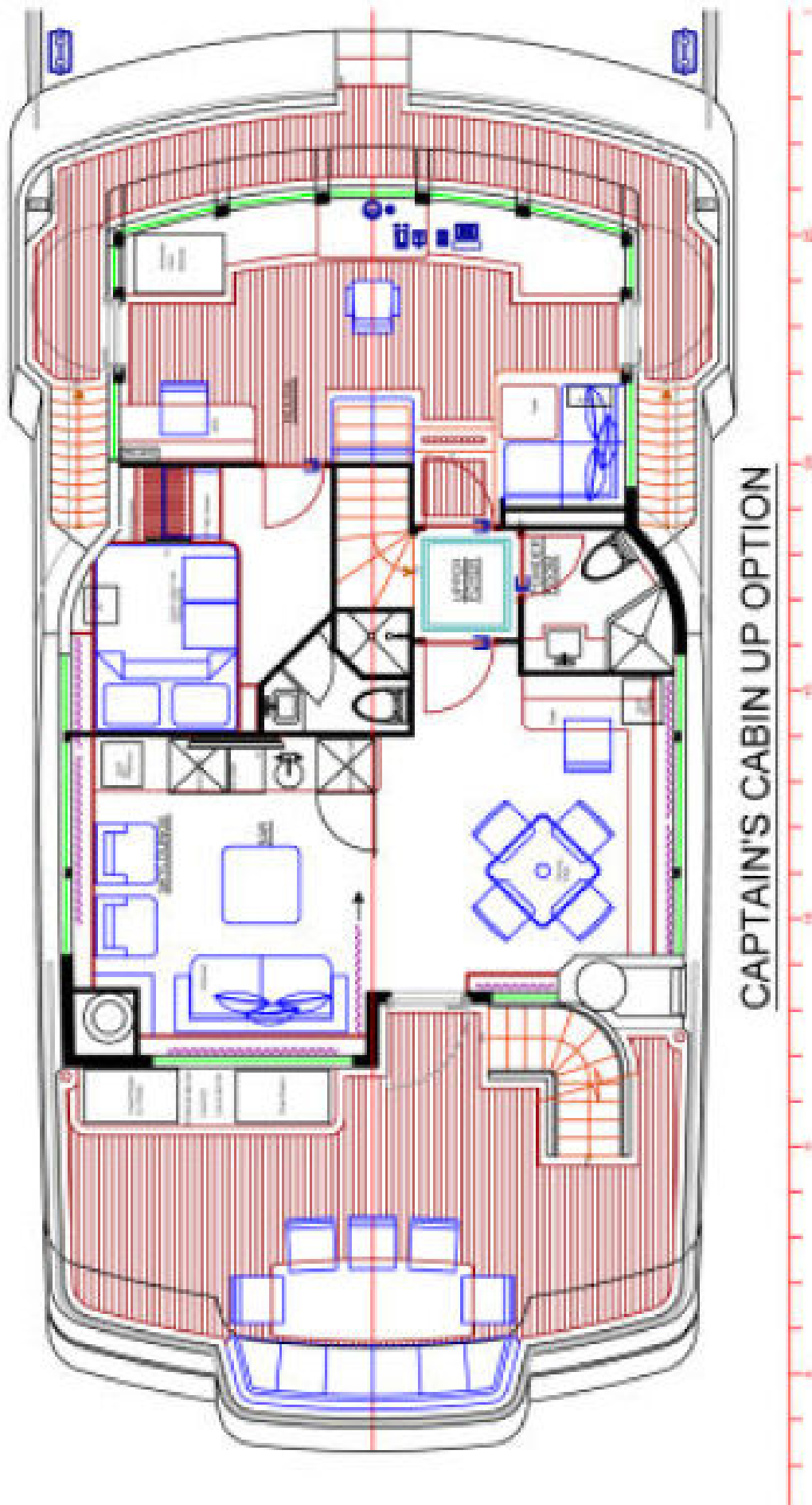
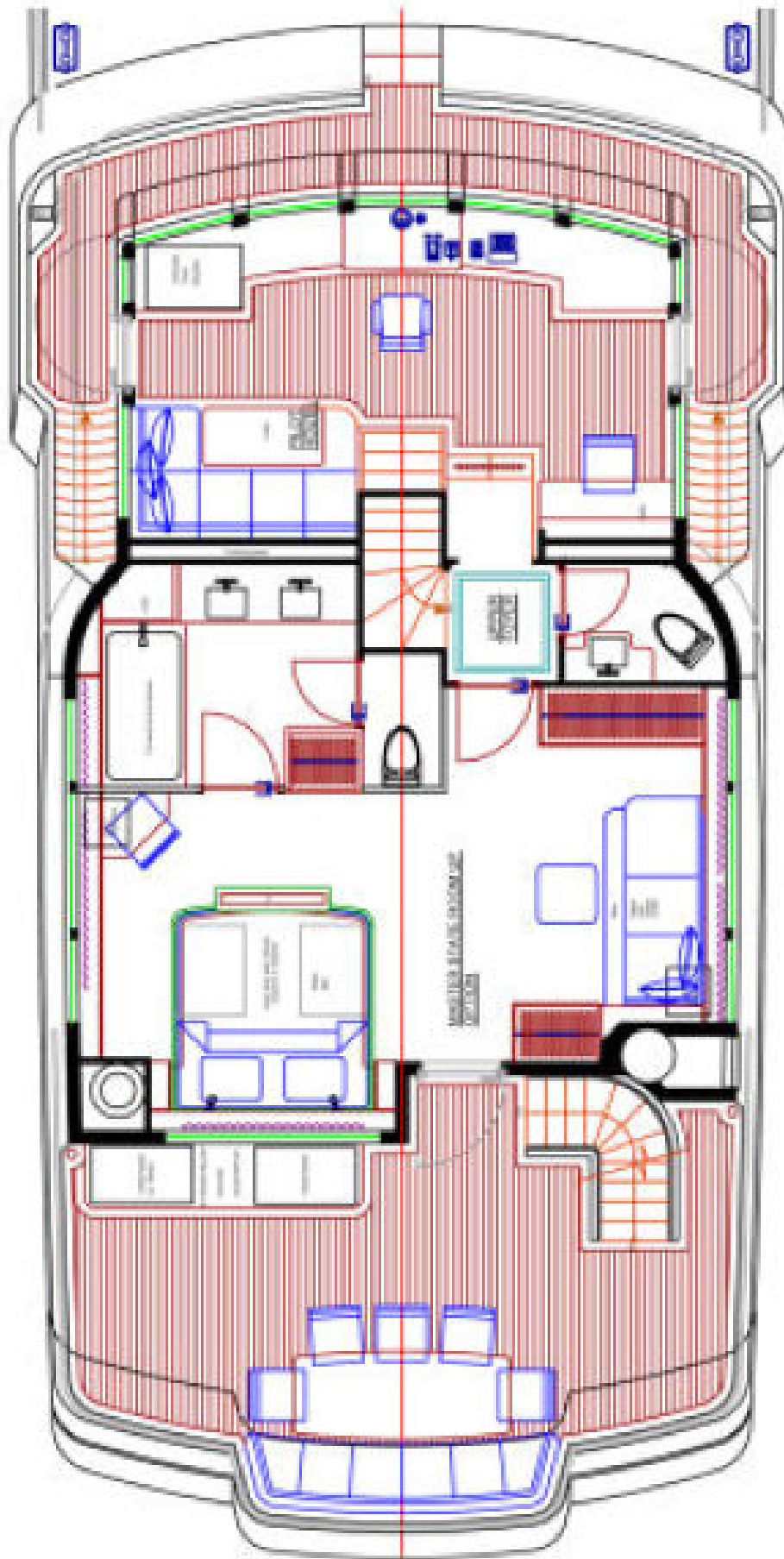
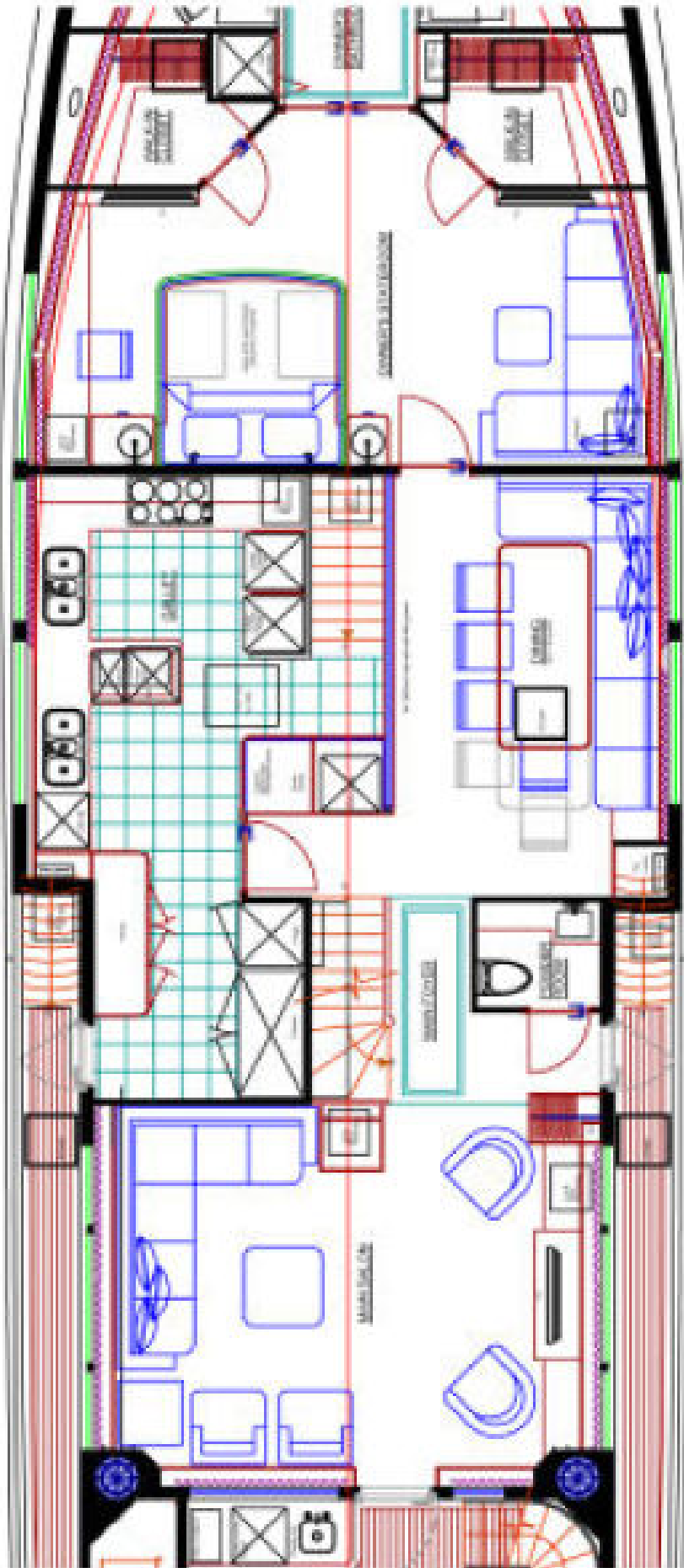


Photo 7 Photo 7



Owner behind wheelhouse layout Tub/shower

Photo 8 Photo 8



OPTIONAL OPEN GALLEY LAYOUT WITH OPTIONAL AND OWNER SUPPLIED ITEMS

Photo 9 Photo 9

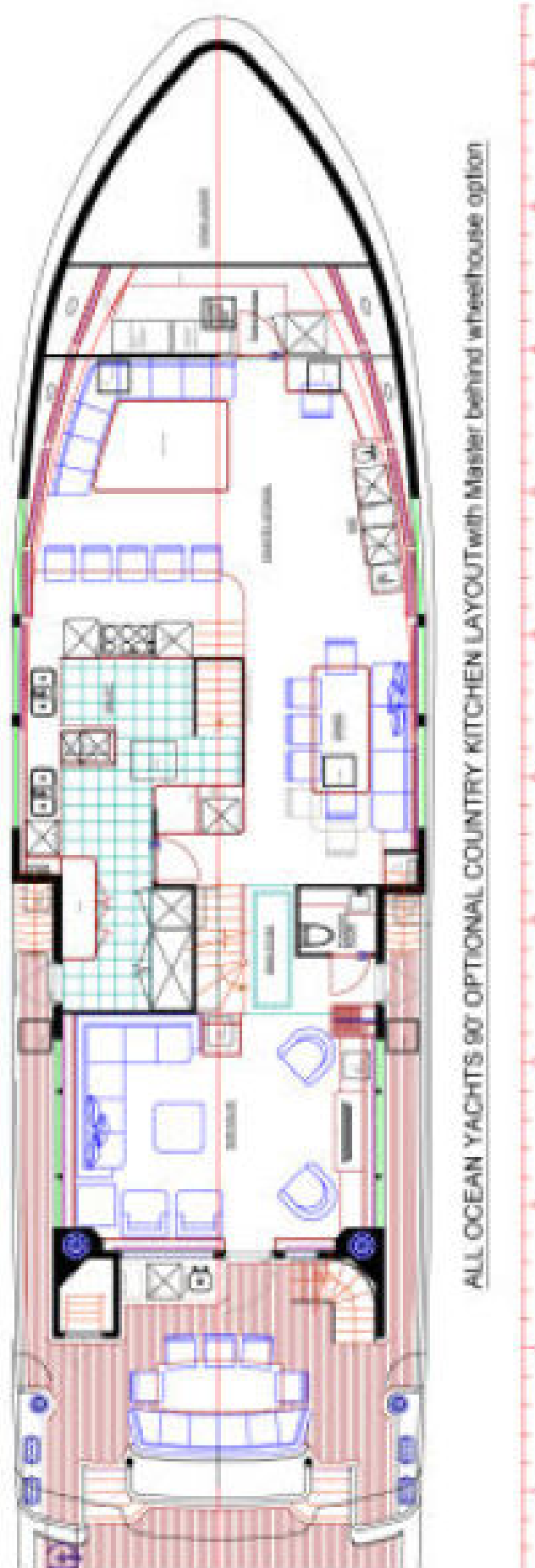


Photo 10 Photo 10



Owner Up / Forward TV lounge and office/Aft bar / Gaming room

Photo 11 Photo 11



Photo 12 Photo 12



Photo 13 Photo 13



Beach view Beach view



Flybridge Flybridge





Flybridge Flybridge



Flybridge Flybridge









