



46' (14.00m) 1974 Bertram Motor Yacht
Stevensville Maryland United States



OVERVIEW

\$79,000

| | | | |
|---------------|------------------|----------------|------------|
| Manufacturer: | <i>Bertram</i> | | |
| Engines: | 2 Detroit Diesel | Hull Material: | Fiberglass |
| Engine Model: | 8V71 Ti | Cruise Speed: | 18 Knots |
| Engine HP: | 435 | Max Speed: | 22 Knots |
| Beam: | 16' 6" | Cabins/Heads: | / 2 |
| Max Draft: | 4' 8" | Fuel Type: | Diesel |
| Water: | 230 G (L) | Fuel: | 615 G (L) |





Data Sheet

Category: Motor Yachts
Condition: Used
Model Year: 1974
Beam: 16'6" (5.03m)
Max Draft: 4' 8" (1.42m)
LOA: 46' (14.00m)
Heads: 2

Maximum Speed: 22 Knots
Cruise Speed: 18 Knots
Fuel Type: Diesel
Hull Material: Fiberglass

Fuel Tank: 615 gal Fresh Water: 230 gal
Holding Tank: 60 gal Builder: Bertram
Designer: Ray Hunt

Engines/Generators

Engine 1

Detroit Diesel
8V71 Ti
Inboard
435HP
324.38KW
Fuel: Diesel
Hours: 1321
Year: 1974
Location: Port

Engine 2

Detroit Diesel
871 Ti
Inboard
Fuel: Diesel
Hours: 1106
Year: 1974
Location: Starboard



Summary/Description

For Sale

Currently the third owner. This boat has had constant upgrades. Maintenance records for past 22 years including engine rebuilds

From The Powerboat Guide: A heavily built yacht with spacious interior accommodations and traditional flush-deck styling, the Bertram 46 Motor Yacht was designed for yachtsmen who placed a premium on solid construction and exceptional seakeeping qualities. She was built on the same wide-beam hull used in the production of the Bertram 46 Convertible, and it's notable the 46 MY is one of the few deep-V motor yachts ever produced by a major American manufacturer. Her standard two-stateroom floorplan featured a very spacious salon with the galley and dinette one step down and a tub/shower in the aft head. (Note that sliding panels converted the dinette into private sleeping quarters.) One of the nice features of a flush-deck yacht is that the skipper stays close to his guests when piloting from the semi-enclosed lower helm position.

Old Bertram's Never Die. They're too tough to kill and too good to retire.

The Sun never sets on the Bertram Empire.

If you are looking for a quality built boat that is built like a tank, take a look at this well cared for wide beam Bertram.

Bertram's are currently built in Tampa Florida. Current new models 35' Sport Fish and 61' Sport Fish. Interested in a new Bertram, give us a call.

This fine Bertram has always been kept in Chesapeake Bay her entire life.

Some reasons to consider this beautiful Classic Bertram Motor Yacht:

Recent bottom paint and thru hulls replaced, recent diesel heating system installed throughout vessel, complete aft deck enclosure, great for fall and winter cruising. Beautiful Custom teak window shades installed in salon. New Memory Foam full queen mattress in aft stateroom. Recent aft deck furniture, 6'6" memory foam couch. Custom high low table converts to coffee table, hydraulically raises for dinner parties. Recent custom made mahogany hi low table in salon.

New Batteries installed July 2018 . 4 House and 4 Maine engine.

Boat currently has over 500 gallon of fuel on board. Ready for new owner.

Accommodations

Accommodations

Forward Stateroom with V-berth

Forward Head w/Sink & Large Separate Shower (could be space for a washer and dryer)

Large Convertible Dinette



CruiseAir Reverse Cycle Air Conditioners Espar Heating System

Large Salon w/Sectional Sofa

(2) Salon Chairs

Huge Master Stateroom w/2 Double Berths

Master Stateroom Head w/Stall Shower & Bath Tub **Galley**

Large Stainless Steel Sink

Pressurized Water System

Hot Water Heater

Formica Counter-tops and Tables

Parquet Wood Floor

Haier Refrigerator/Freezer

Samsung Microwave Oven

Princess 3-Burner Electric Range/Oven

Lots of Storage**Electrical**

Onan 15KW Generator

Battery Charger

Battery Switches

Twin 50a 125v Electric Shorepower

Deck and Hull

Forward Deck Hatch with Screen

Large Forward Bow Seat

Dockside Water Hookup

(2) Aft Deck Wing Doors

Recent Aft Deck Enclosure

Opening Windshield Vent

Bow Pulpit with Windlass

Remote Control Spotlight

Swim Platform and Boarding Ladder

Aft Deck Carpeting

Helm Seat w/Storage

Aft Deck Wet Bar w/Sink & Ice Maker **Additional Features**

Trim Tabs

Custom Wood Blind Window Treatments

Electric Heads

Recent Isenglass Aft Enclosure, Bridge Cover and Bimni

Lucite Wing Doors w/Bertram Logo

Freshwater Cooling

Indirect Cabin Lighting

Sectional Sofa in Salon

New Seacocks for A/C and Genset Airseps on Main Engines Halon Fire System

Raw Water Sea Strainers **Electronics and Helm**

- VHF Radio
- Digital Depth Finder
- GPS
- Auto Pilot is Non-Functioning
- Trim Tabs
- Glendinning Engine Synchronizer
- 3 Windshield Wipers





- Danforth Constellation Compass





Cruising



Dock side



Bertram dockside



Walk around to bow



Bow seating



Lower controls



Wide over hangs protect windows



Leather seating





Fly bridge seating



View from upper steering



Salon Custom made window treatments



New 55 " flat screen Smart Samsung



down to aft stateroom



43" smart TV in aft cabin



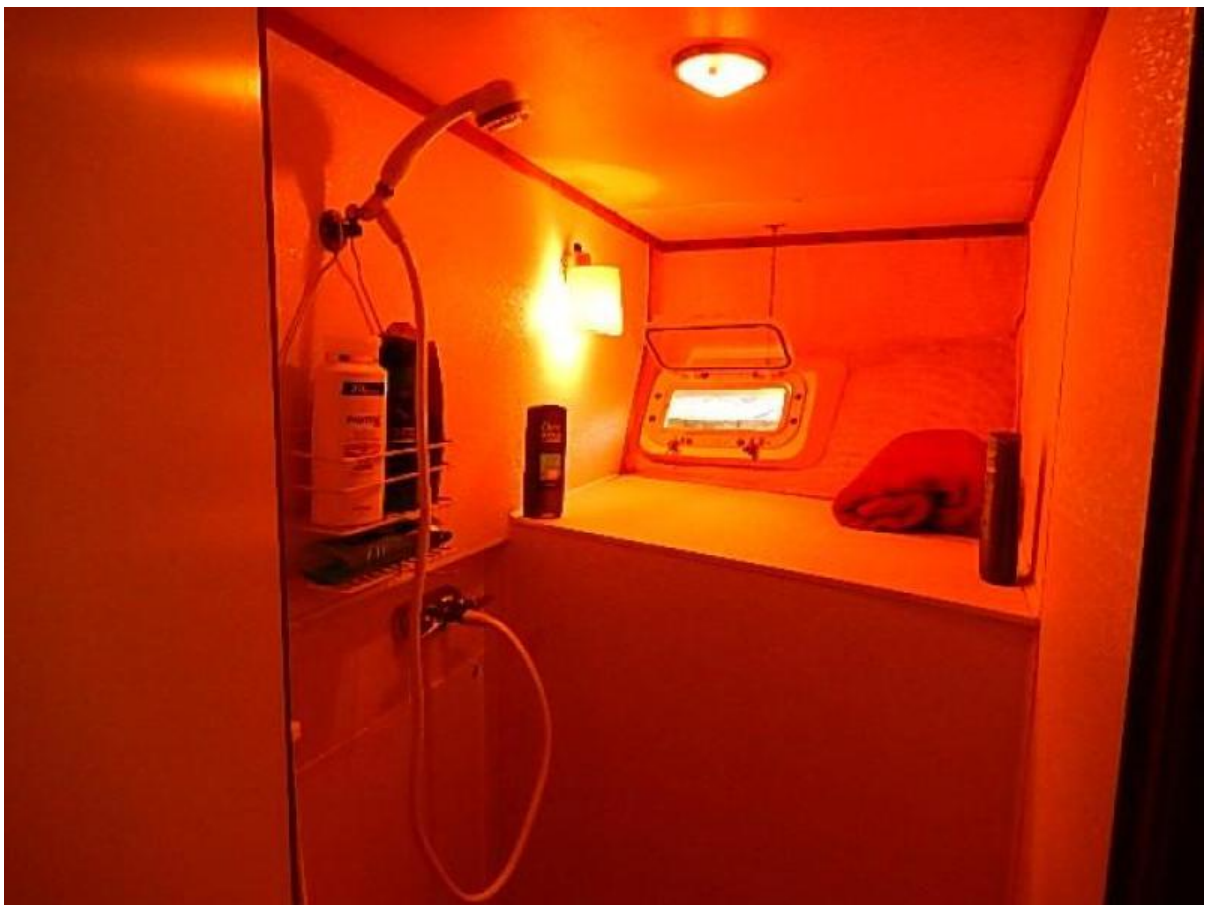
Bath tub aft stateroom



Galley down one step



Forward head



Huge forward enclosed shower stall



Galley starboard side one step down



Walk around Queen bed aft stateroom



Up to saloon



Bridge steering



Bimini top



View from bridge



Garmin chart plotter



VHF



Leather recliner



Dock side



Stern view



Full enclosure



Engine room / twin 8-71 Detroit's



Twin Detroit's 1,200 hours since Rebuild



11 Gallon water heater



18 KW Onan generator



Recent Diesel heater/great in fall and winter



Aft stateroom



Bow view



Recent aft deck enclosure



Guest stateroom forward



Aft head with tub shower



New aft deck furniture



Gel memory foam couch



Lower steering station



Great view



Beautiful teak hi low dining table



Recent custom teak window shades



55" Samsung smart TV



Salon looking forward



Forward guest stateroom/ head and stall shower



Full enclosure / all weather comfort



Aft enclosure great for fall cruising custom made pull down white sun shades to keep sun out of aft deck



Bridge ladder hangs from ceiling



AC / DC panel



High low table



Converts to coffee table



Wing doors port and starboard

Icerette
AUTOMATIC ICE CUBE MAKER

CAUTION: ELECTRIC SHOCK HAZARD. Do not power Icerette machine until connected before connecting power. Follow these safety rules to avoid electrical injury or death.

DO NOT WATERFILL THIS UNIT WITH ANY TYPE OF ANTI-FROSTING. Careage to the usual starting will occur. Avoiding the need for Icerette. We have and existing this potential for health hazard.

Never remove water. DO NOT USE WATER. Icerette, designed to hold 10 cups of water. Any other water will be used for water in the bucket.

IMPORTANT: TO AVOID OVERHEATING When used, it is not to be used for 10 days and 10 days after 10 days. 10 days after 10 days. 10 days after 10 days.

WARNING: DO NOT REMOVE ICE MOLD ASSEMBLY This unit is not to be used. The unit is not to be used. The unit is not to be used. The unit is not to be used.

English edition: 800-825-4000
Raritan, Inc., 1000 Raritan Road, Raritan, NJ 08869
www.raritan.com

RARITAN
The Ice Cube Maker



New microwave



New Memory Foam full Queen





Haul out July 2018



Recent bottom paint, sinks and thru-hulls



Gel coat still shines



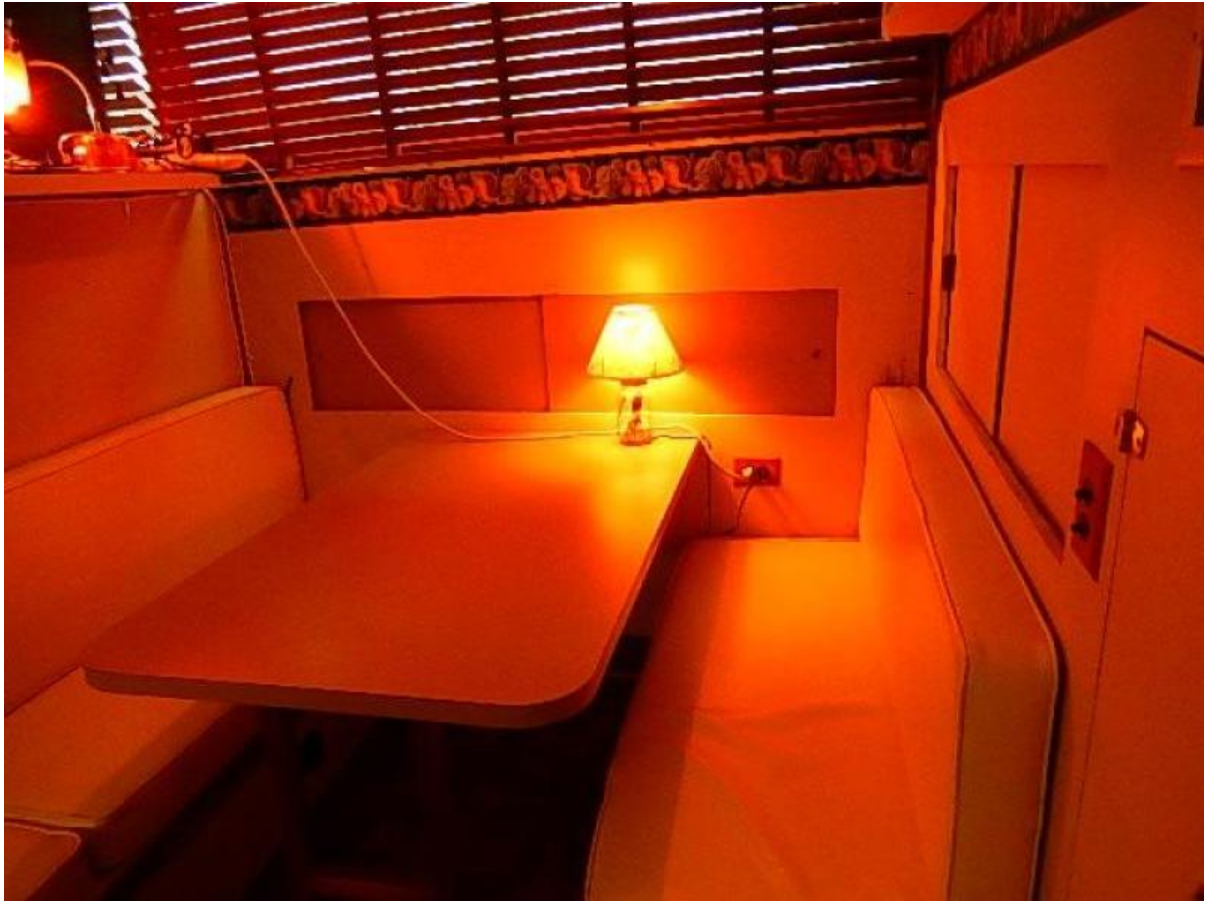
all new 8 D batteries replaced during haul out



Bertram deep V hull



Large dinette converts to double bed



Bow pulpit/windless



Looking aft from bow