



52' (15.00m) 2001 Bluewater Yachts millennium
Ft Lauderdale Florida United States



OVERVIEW

Manufacturer:	Bluewater Yachts		
Engines:	2 Cummins	Hull Material:	Fiberglass
Engine Model:		Cruise Speed:	Knots
Engine HP:	370	Max Speed:	Knots
Beam:	14' 6"	Cabins/Heads:	/
Max Draft:	"	Fuel Type:	Diesel
Water:	136 G (L)	Fuel:	375 G (L)

\$239,000





Data Sheet

Category: Motor Yachts
Condition: Used
Model Year: 2001
Beam: 14'6" (4.42m)
LOA: 52' (15.00m)

Knots
Knots
Fuel Type: Diesel
Hull Material: Fiberglass

Fuel Tank: 375 gal Fresh Water: 136 gal
Holding Tank: 50 gal

Engines/Generators

Engine 1

Cummins
Inboard
370HP
275.91KW
Fuel: Diesel
Hours: 1500
Year: 2001

Engine 2

Cummins
Inboard
370HP
275.91KW
Fuel: Diesel
Hours: 1500
Year: 2001



Summary/Description

For Sale

2001 52' BLUEWATER 5200

Port engine replaced.

PERFECT BOAT TO DO THE GREAT LOOP IN!

The Bluewater 5200 is like living in a small condo with a great upper helm with all the amenities. There is no comparison with ceiling height and ingress egress to the main salon to a Sea Ray or most other yachts of this size.

This Bluewater 5200 Millennium Edition Motor Yacht was designed as a big boat that can go many places even in thin water. Bluewater Yachts are built to be "easy to handle at sea, yet would also be able to be nosed up on a sandy beach." That's what Bluewater founder, Jim Klapmeier, intended and according to reputation that's what he achieved. This 52 is a perfect live aboard with many new furnishings and is turn-key ready for a new owner.

Owners have lived aboard since 2001 (their Florida home) and have travel extensively in the yacht: The yacht was purchased in Kentucky and the owners drove the yacht via Ohio, Tennessee, Ten Tom, down Mobile Bay, across the Gulf of Mexico, to the West Coast of Florida and finally to Miami Beach.

The owners have spent many months the Bahamas and in the Abacos, generally gunkholing around. The yacht's shallow draft allowed the owners to go to many places that other yachts cannot go.

The owners have cruised the Bluewater to Key Largo, Key West, and many other Keys.

Additionally the owners have cruised the Bluewater along the Intercoastal from Ft Lauderdale to Palm beach, St Augustine, Hilton head, Charleston and Savannah.

In 2006 the owners moved the Bluewater to Baltimore for two years in order to explore the Chesapeake Bay area.

From Baltimore they owners cruised the Bluewater up the Potomac River to Washington DC, practically in front of the Washington Monument. From Baltimore the owners cruised the Bluewater to New York City and up the Hudson River to the Erie Canal.

The owners have effectively cruised aboard the the Bluewater for 3/4's of the Great Loop!

Returning to Florida, the Bluewater travel to the West Coast via the Okeechobee.

The boat is currently located in Ft Lauderdale.

Starting at the top we have flybridge with hardtop and custom enclosure. The upper helm station features a hide-away electronics console that disappears when not in use. A full electronics package includes: Garmin 2006C GPS, Raymarine autopilot, Ritchie electronic compass, Raymarine Speed / Depth displays, Back up video camera and display, JVC sound system, and Bow thruster controls.

The aft deck is large with wet bar with grill and refrigerator. There's a large circular guest lounge with table for fresh air entertaining and dining.

To either side are stairways down to the main deck and the salon. Aft is sun deck with huge sun pad and a stairway down the cockpit and custom extended swim platform for fishing, swimming, or diving. There is an 11' Novurania center



console tender with 25-hp Yamaha motor. A Rule power davits allows easy launch and retrieval.

The carpeted salon is open, bright, and inviting. Forward we have the living area with lower helm station, reclining easy chair, and sofa with recliners. Aft we find a breakfast bar with overhead TV and full galley with full size refrigerator/freezer with ice maker, dishwasher, solid surface counter top, electric cook top, double sink, and built-in microwave / convection oven. There is a large wraparound dinette for comfortable dining.

There are two staterooms. The forward stateroom has island queen berth, cedar-lined hanging locker, TV, and en suite head with shower. The aft stateroom features queen berth a mirrored vanity, cedar-lined hanging locker, wash/dryer combo, and ensuite head with tub/shower. Sliding door gives easy access to the cockpit.

Features:

- * Full hardtop over bridge deck - great sun protection
- * Stratoglass fly bridge enclosure
- * Custom Fiberglass BBQ cover
- * Custom 3' Fantail Extension for Tender
- * Custom electric davit for tender
- * Custom swim step ladder
- * Glendening Cablemaster
- * Electric engine oil change system
- * Electric anchor windless
- * Electrasan toilets (2)

Powered by twin 370-hp Cummins diesel engines, is equipped with a Onan generator and three air conditioner with digital controls.

She has the accommodations and equipment to serve as a weekend getaway, a live-aboard, or an extended cruiser.

Call now for more information and to schedule a showing of this wonderful, roomy, 52' Bluewater Millennium Edition motor yacht.

Overall

This Bluewater Yachts 52 Millennium Edition has been owned by the same couple since it was one year old. They have employed a professional captain and an open checkbook for maintaining this fine yacht. No expense has been spared. This is without question the finest Bluewater available and a rare opportunity to own a big beautiful yacht without the big yacht price tag!

Like all Bluewaters, this yacht features a massive upper deck perfect for entertaining. The flybridge features a wide helm adjustable bench seat and seating for 14 or more, round table and huge queen size sunpad. A wet bar, Norcold fridge, propane grill and tons of storage round out the massive upper deck. Paradiso also features a custom Isenglass helm



enclosure, fiberglass hard top over helm area and the optional extended hard top to keep guests cool and dry. There are custom stainless grab rails installed throughout the upper deck for safety.

Accommodations

Accommodations

- Large salon with large windows
- Sofa power Recliners
- Easy chair recliner
- Wraparound dinette
- Full galley
- Well equipped lower helm station
- Custom curtains

Galley

- Two burner cook top
- Microwave / convection oven
- Full size refrigerator / freezer
- Dishwasher
- Washer and dryer
- Breakfast bar
- Wraparound upholstered dinette

Electronics and Nav



- Upper helm retractable instrument panel
- Garmin 2006C GPS
- Raymarine autopilot
- Ritchie electronic compass
- Raymarine Speed / Depth displays
- Back up video camera and display
- JVC sound system
- Bow thruster controls
- Fully equipped lower helm station
- Three digital televisions
- Panasonic sound system with CD changer and many speakers

Hull and Deck

- Large bridge with room to entertain or relax
- Hard top with custom Stratoglass enclosure
- Well equipped upper helm station
- Outdoor galley with propane grill, Norcold refrigerator, and sink
- Seating for 14 or more
- Bench seating with adjustable table
- Huge sun pad



- Stairways to side decks
- Foredeck with tall bow rail
- Anchor and windlass
- Covered aft deck
- Custom extended swim platform
- Rule davit crane
- Canvas covers for seats, BBQ, and windows

Mechanical and Electrical

- Twin 370-hp Cummins diesel engines - 1500 hours on Starboard engine, 3 hrs on starboard engine w/ 90 day warranty (since replacement).
- Onan generator - 2700 hours
- Inverter
- Power windlass
- Rule power dinghy davit
- Bow thruster
- Three Marine Air reverse cycle HVAC units
- Electrosan heads
- New water heater
- Oil change system
- Dual Racor filters

Excluded



11' Novurania center console tender with 25-hp Yamaha outboard RIB tender and motor excluded but available for purchase





Bow



Bow



Cockpit cameras



Cockpit ladder holder



Bridge canvas



Bridge seating canvas covers



Bridge seating



Pop-up instrument pod



Helm seating



Guest seating at helm



BBQ



Guest table



Bridge



Salon convertible couch



Electric couch



Dining table



Dining table



Salon from galley



Post hole



Galley seating



Galley



Galley



Dish washer



LCD TV in galley



Inside helm



Electronic engine controls



Forward stateroom



Forward stateroom



Bow Thruster



Aft stateroom



Aft stateroom



Aft stateroom



Washer Dryer



Tub



Head



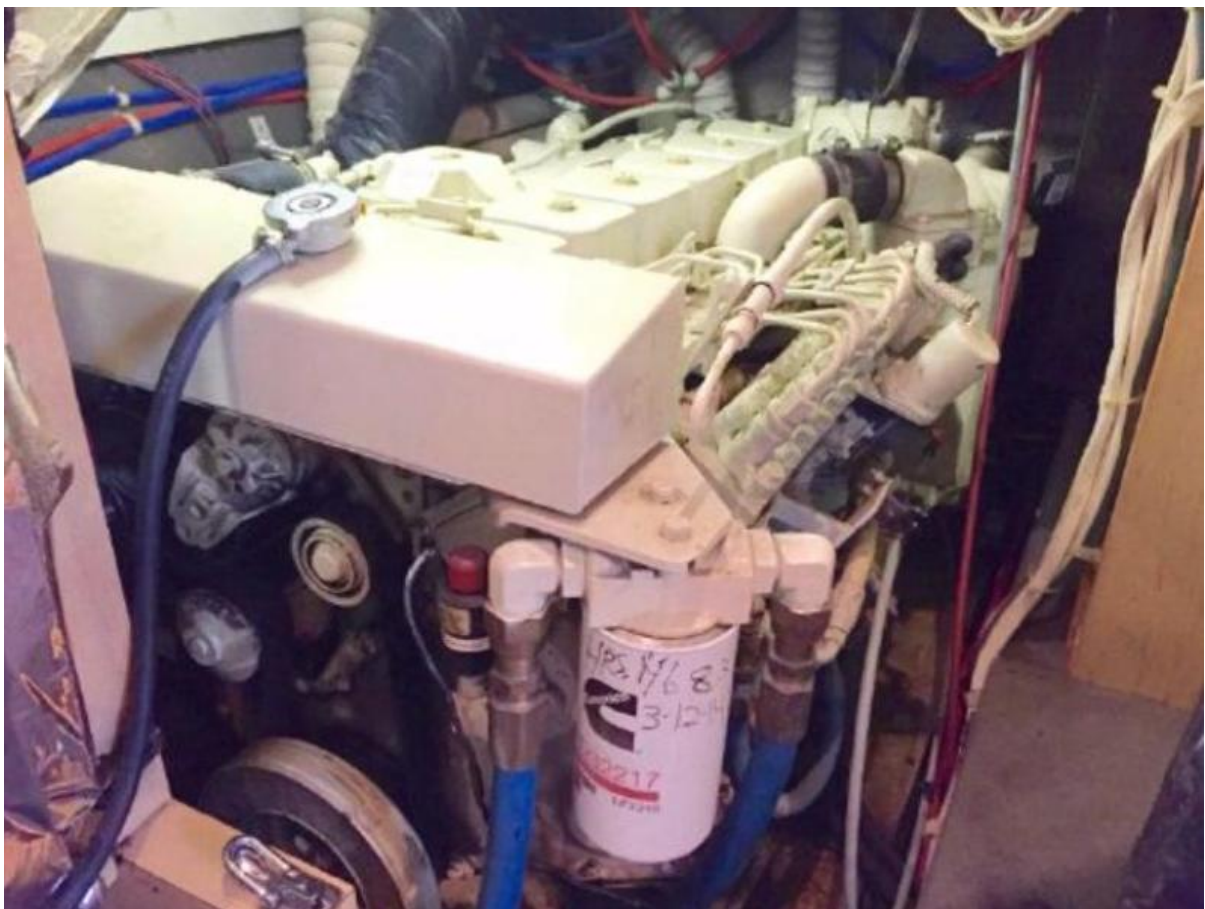
Shower



Ceder hanging locker



Batteries under aft bed and port engine access



Starboard Engine under galley counter



AC unit



Raw water filters in floor locker



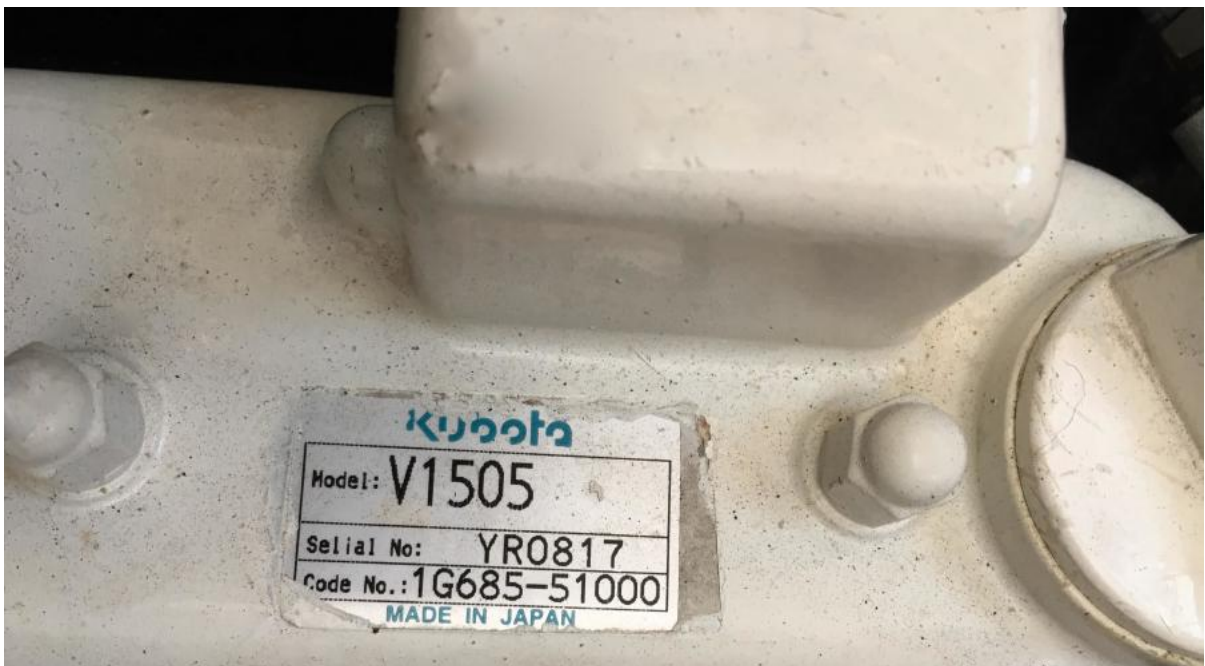
Racor dual filter in floor locker



In-Floor storage locker



Dripless shafts



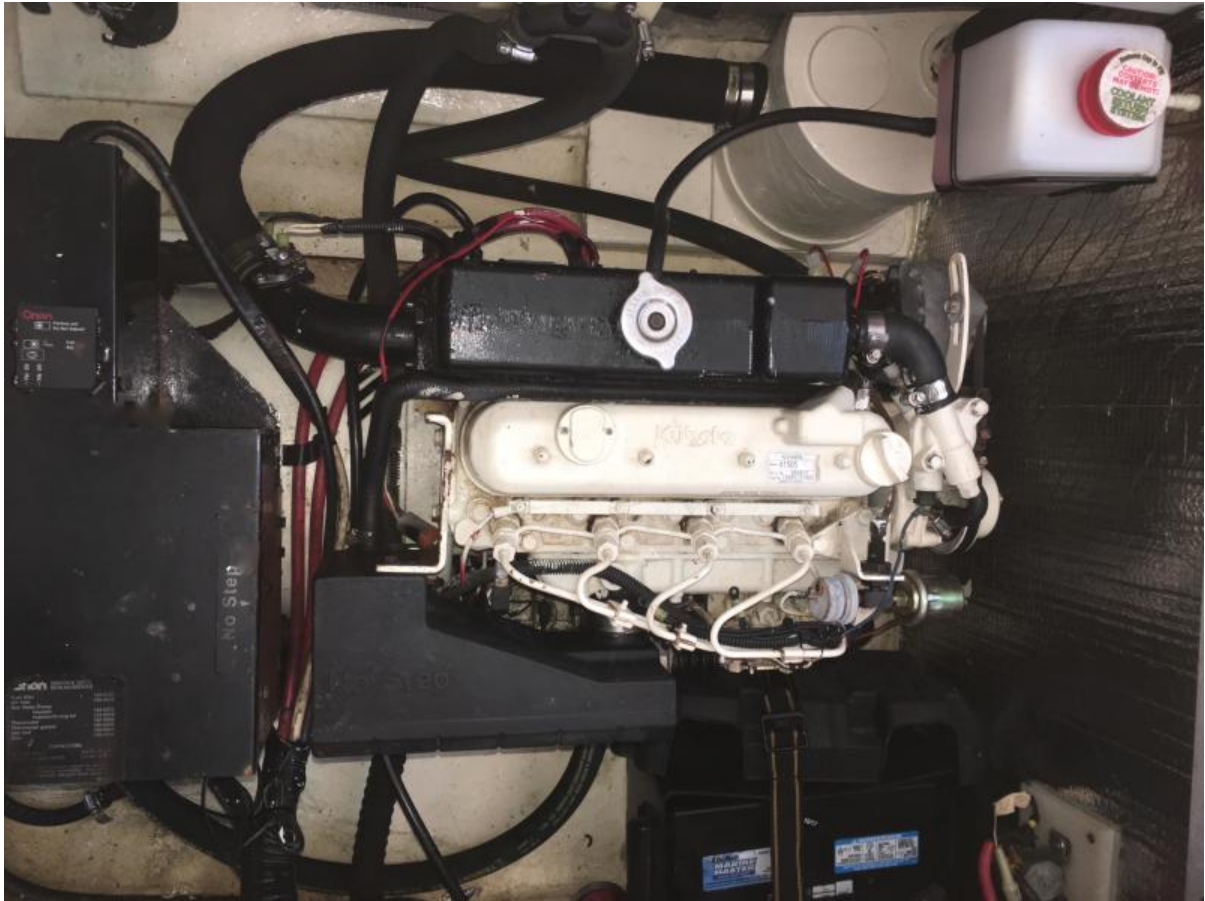
generator model



Floor locker



New water heater



Generator in floor locker



Starboard engine access under galley



Cummins 370



Engine



Engine